



# BIG BOX ANCHOR SITE AVAILABLE

Independence Blvd  
Wilmington, North Carolina

CONTACT | Will Black

direct: 704.206.8349

wblack@collettre.com

Hill Rogers

direct: 910.251.2324

hill@cameronco.com



## PROPERTY DETAILS

- Big Box Anchor Site Available located within The Pointe at Barclay at S 17th St & Independence Blvd. in Wilmington, NC
- ~5.25 acres - Can accommodate ~55,000 SF with parking
- Site is level and rough-graded with all utilities brought to site

## DEMOGRAPHIC SNAPSHOT (2018)

	1 mile	3 mile	5 mile
Population	6,877	58,288	133,457
Projected Pop. (2023)	7,452	62,643	144,008
Average HH Income	\$73,681	\$71,498	\$65,999
Daytime Population	3,654	31,313	65,915
Total Businesses	437	3,492	7,190

## TRAFFIC COUNTS

S 17th Street	27,000
Independence Blvd.	15,000





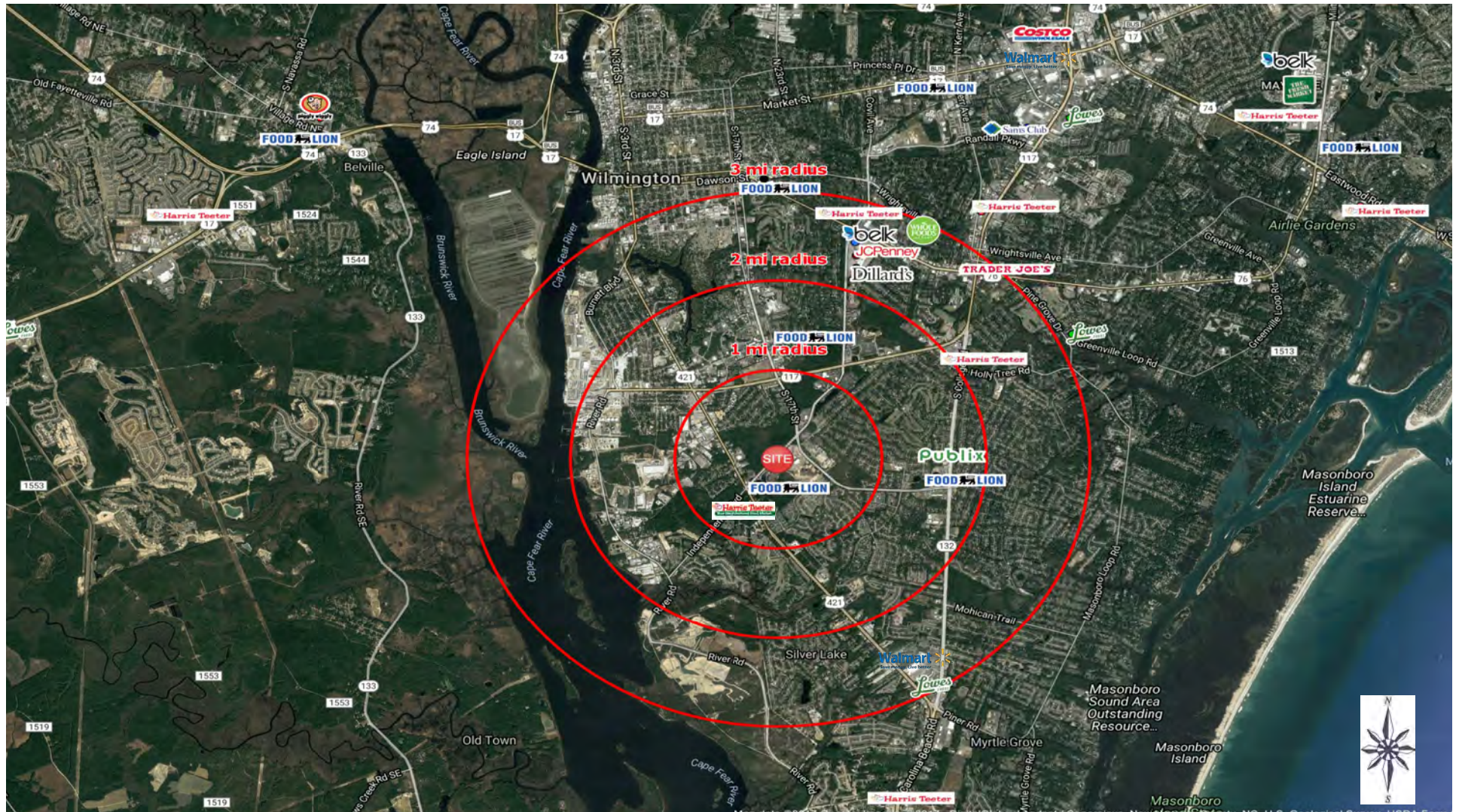


# BIG BOX ANCHOR SITE AVAILABLE

## RETAIL AERIAL

CONTACT | Will Black  
direct: 704.206.8349  
wblack@collettre.com

Hill Rogers  
direct: 910.251.2324  
hill@cameronco.com



1111 METROPOLITAN AVE, STE 700, CHARLOTTE, NC 28204  
Mailing: P.O. BOX 36799, CHARLOTTE, NC 28236-6799  
704.206.8300 | WWW.COLLETTRE.COM







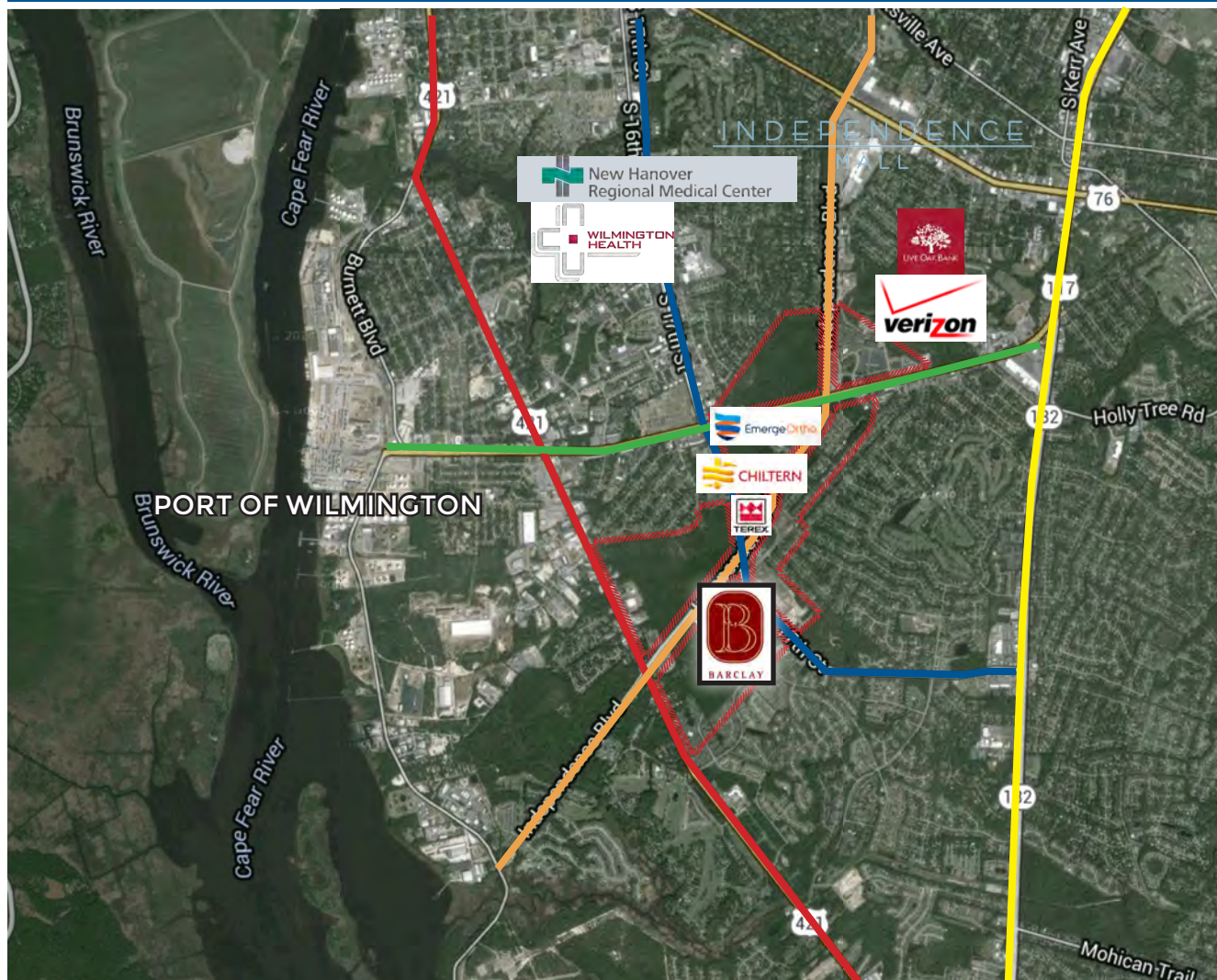
**Hill Rogers**  
direct: 910.251.2324  
hill@cameronco.com







**Hill Rogers**  
direct: 910.251.2324  
hill@cameronco.com



New Hanover Regional Medical Center	7,000+
Verizon	1,200+
Wilmington Health	500+
Live Oak Bank	400+
EmergeOrtho	175+
Chiltern	175+
Terex	50+

 Carolina Beach Rd
  Independence Blvd
  S. 17th St
  Shipyard Blvd
  S. College Rd

/////// Cameron Properties

1111 METROPOLITAN AVE, STE 700, CHARLOTTE, NC 28204  
Mailing: P.O. BOX 36799, CHARLOTTE, NC 28236-6799  
704.206.8300 | [WWW.COLLETTRE.COM](http://WWW.COLLETTRE.COM)

