



±4,233 SF FOR LEASE

Second Generation Restaurant Available w/ Drive-thru

10735 US-15 | Southern Pines, NC 28387



1111 Metropolitan Avenue, Suite 700
Charlotte, NC 28204
704.206.8300

Stanford Garnett
direct: 704.206.8345
sgarnett@collettre.com

Will Black
direct: 704.206.8349
wblack@collettre.com

10735 US-15

Property Details

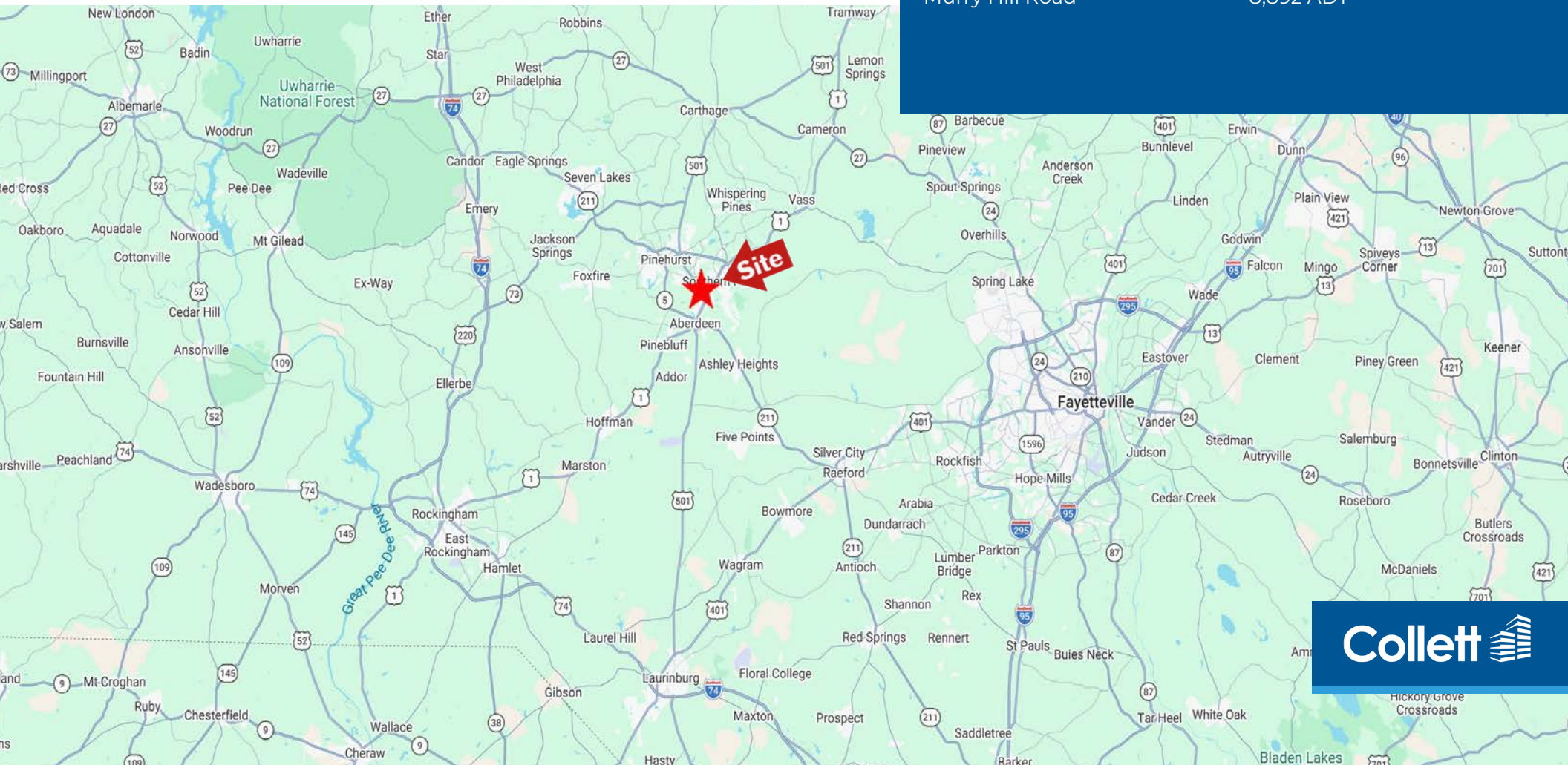
- 4,233 SF for Lease on ±1.19 acres
- Second Generation Restaurant Available w/ Drive-thru
- Situated directly on US-15 (US-15/501), this property sits in the heart of the primary retail and commercial artery for Southern Pines and neighboring Pinehurst
- Cross access throughout entire property, and to signalized intersection
- Full movement onto US 15-501
- **Call for Pricing**

DEMOGRAPHICS (2025)

	1 mile	3 miles	5 miles
Population	2,762	25,321	50,084
Daytime Pop.	3,892	16,359	29,288
Avg. HH Income	\$73,609	\$125,501	\$128,303

TRAFFIC COUNTS

US Hwy 15	30,900 ADT
Murry Hill Road	8,892 ADT



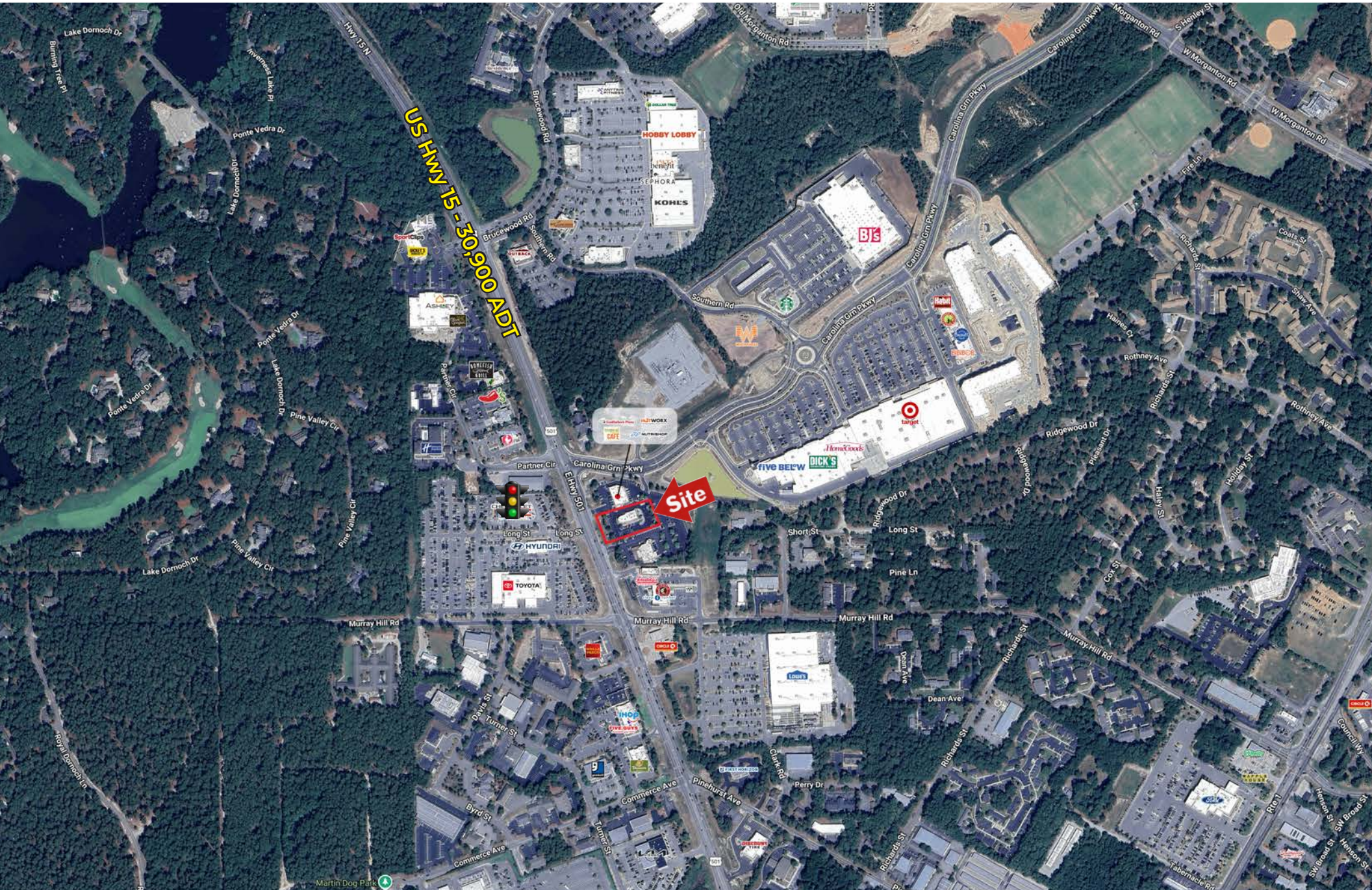
10735 US-15

Building Photos



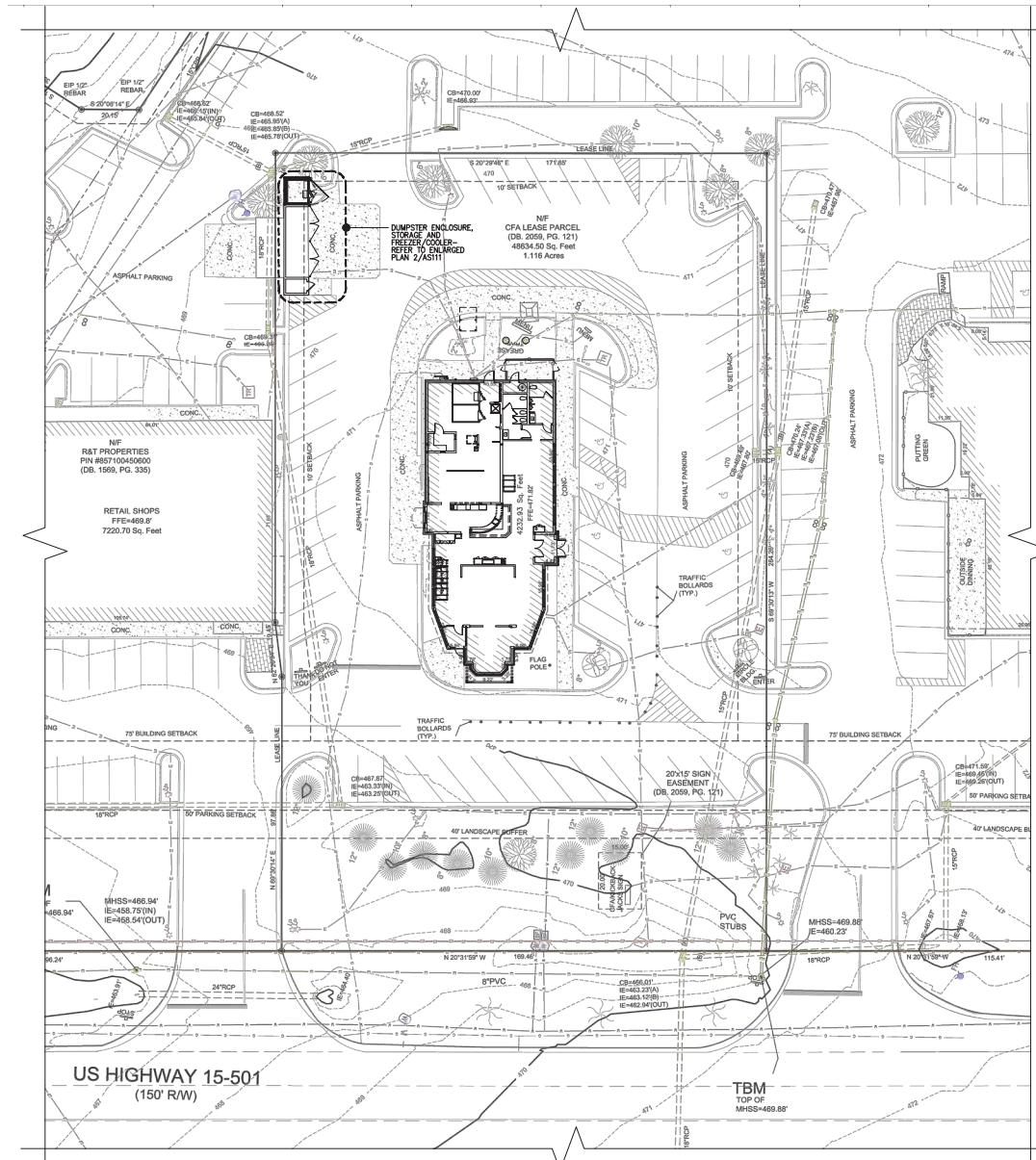
10735 US-15

Aerial



10735 US-15

Site Plan



10735 US-15

Southern Pines/Pinehurst, NC

Located in the heart of North Carolina's Sandhills region, Moore County offers a unique blend of small-town charm, economic strength, and exceptional quality of life. Home to approximately 130,000 residents, the county benefits from its strategic location just one hour south of Raleigh and the Research Triangle, providing convenient access to major employment centers while maintaining a relaxed, community-oriented lifestyle.

Anchored by the Tri-Cities of Pinehurst, Southern Pines, and Aberdeen, Moore County offers a diverse mix of shopping, dining, healthcare, recreation, and cultural amenities. Southern Pines features a vibrant downtown and expanding retail corridor, while Pinehurst is internationally recognized for its world-class golf, historic village center, and resort atmosphere.

The area also benefits from its proximity to Fort Bragg, one of the nation's largest military installations, which contributes to a highly skilled workforce and strong regional economy.

With easy access to major highways, three international airports within two hours, and North Carolina's mountains and beaches, Moore County continues to attract residents, visitors, and businesses seeking a premier lifestyle destination with long-term growth potential.

