



Main Street Retail Available

217 N. Main Street | Greenville, SC 29601



217-A E. Washington Street
Greenville, SC 29607
864 752 0300

Cortney Carter
1 864 752 0302
ccarter@collettre.com

Main Street Retail Available

Property Overview

PROPERTY FEATURES

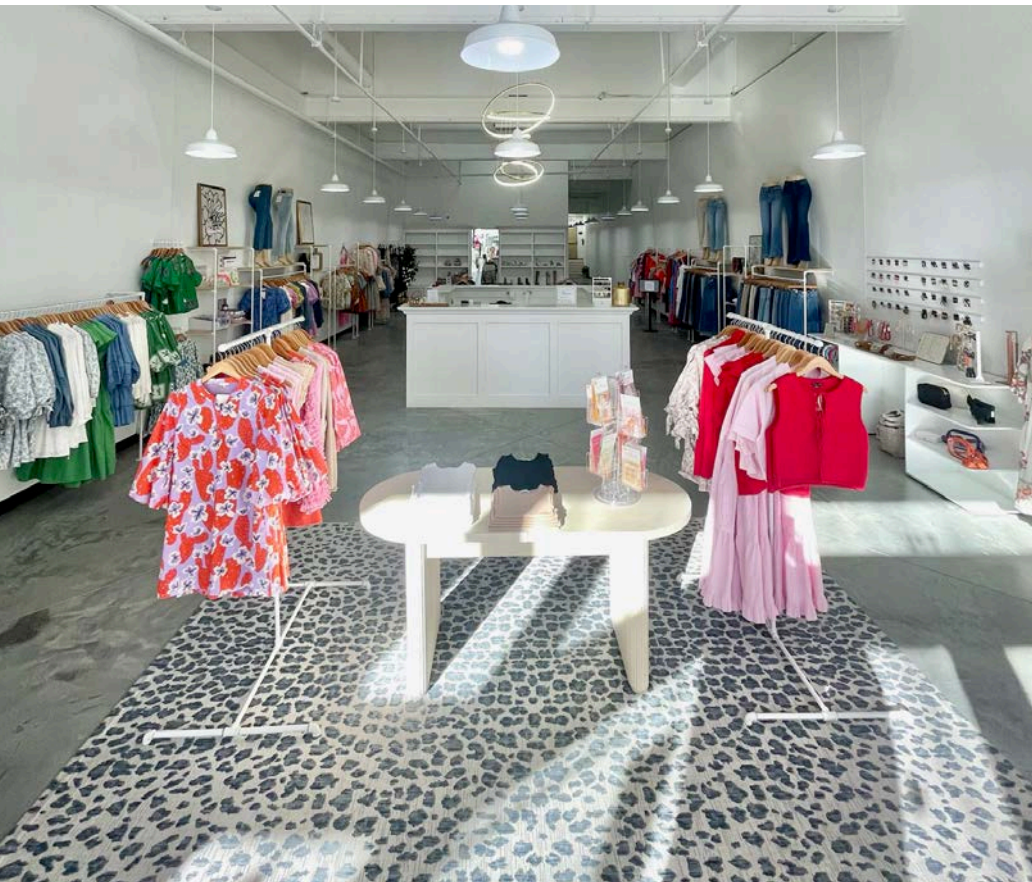
- Main Street retail space available for sublease
 - 217 N. Main Street: ±3,618 SF
- Current Maren + Main
- Located across from NOMA square, anchored by 327-room Hyatt Regency and office tower
- New storefronts recently installed
- Nearby retail/restaurants include Sushi Go, Kilwins, Tselia Coffee, Lou Lou Boutique, The Comedy Zone, Bluemercury, J. McLaughlin, Savannah Bee Company, Mast General Store

DEMOGRAPHICS

	1 mile	3 miles	5 miles
Population	12,666	85,439	178,736
Avg. HH Income	\$140,901	\$110,864	\$107,968
Households	6,467	37,026	76,791
Employees	21,906	60,546	107,537

TRAFFIC COUNTS

Beattie Place	12,886 VPD
W. North Street	13,128 VPD



Main Street Retail Available

NOMA Square



NOMA Square is the large plaza situated in the North Main area of Downtown Greenville, SC.

Located directly across from 217-219 N. Main Street, NOMA Square is anchored by a 327-room Hyatt Regency and office tower with on-site retail and restaurants. The attractive plaza features a permanent stage and is home to year round free community events including concerts, yoga, Oktoberfest, and more.



Main Street Retail Available

Aerial



Main Street Retail Available

Leasing Plans

