



# MILLS CROSSING

Highway 160 and Len Patterson Road  
Fort Mill, SC 29708

CONTACT | David W. Hendrick, Sr.  
direct: 704.206.8350  
dhendrick@collettre.com

Wesley Walls  
direct: 704.206.8338  
wwalls@collettre.com



## DEMOGRAPHIC SNAPSHOT (2018)

	1 mile	3 mile	5 mile
Population	5,671	38,329	101,082
Projected Pop. (2023)	6,450	43,456	114,137
Avg. Household Income	\$109,770	\$118,025	\$103,552

## TRAFFIC COUNTS (2017)

Highway 160	30,000
-------------	--------

## PROPERTY DETAILS

- **FULLY LEASED!**
- Mills Crossing is a ± 48,000 SF community shopping center anchored by Earth Fare.
- Tenants Include: Pet Supplies Plus, Bella Nail Salon, Heartland Dental, Porter Paints, First Watch Cafe, Blow Out Beauty & Dry Bar, Club Pilates, Cycle Bar and more!

1111 METROPOLITAN AVE, STE 700, CHARLOTTE, NC 28204  
Mailing: P.O. BOX 36799, CHARLOTTE, NC 28236-6799  
704.206.8300 | WWW.COLLETTRE.COM

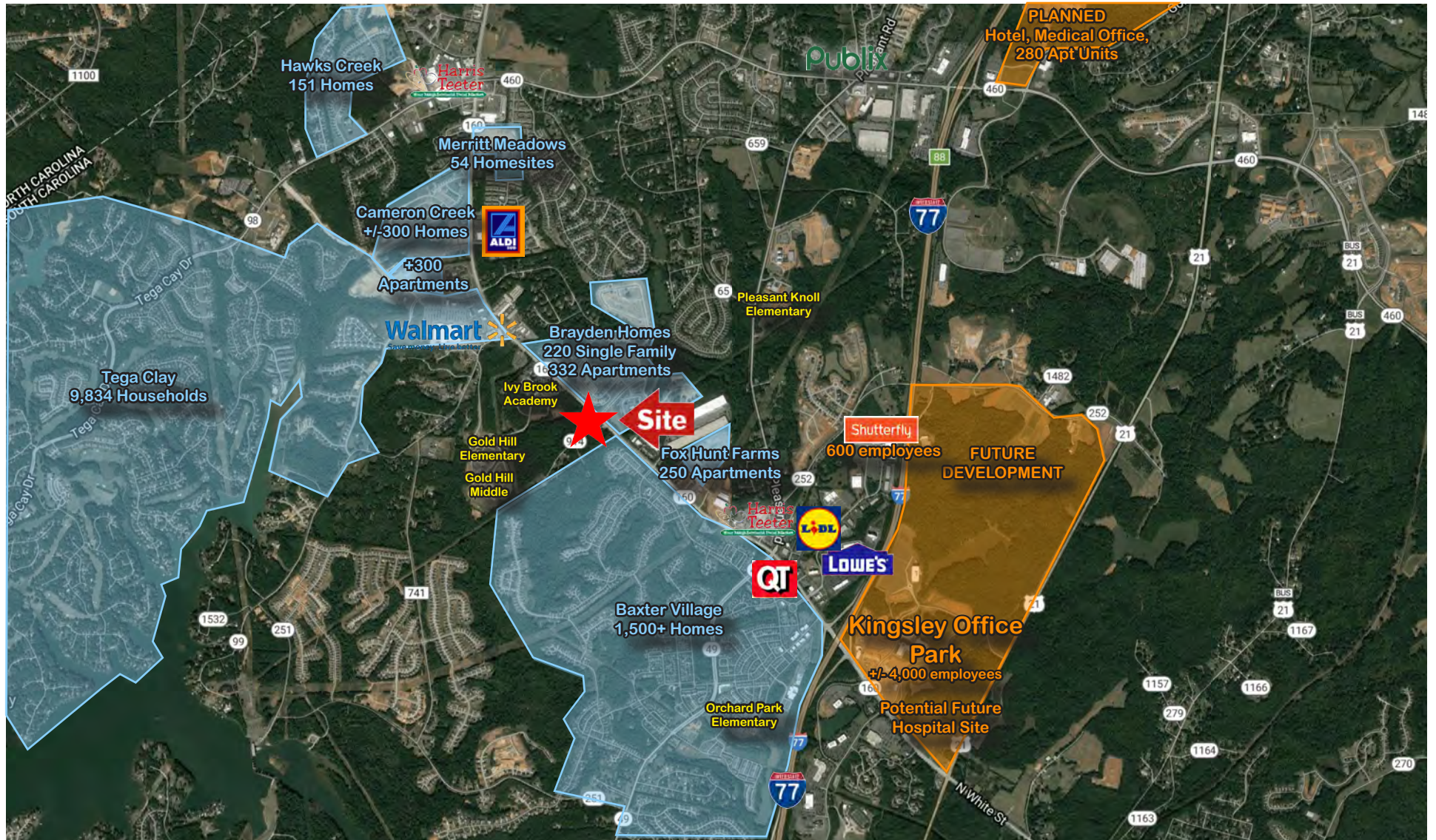




# MILLS CROSSING MARKET AERIAL

CONTACT | David Hendrick  
direct: 704.206.8350  
dhendrick@collettre.com

Wesley Walls  
direct: 704.206.8338  
wwalls@collettre.com



1111 METROPOLITAN AVE, STE 700, CHARLOTTE, NC 28204  
Mailing: P.O. BOX 36799, CHARLOTTE, NC 28236-6799  
704.206.8300 | WWW.COLLETTRE.COM

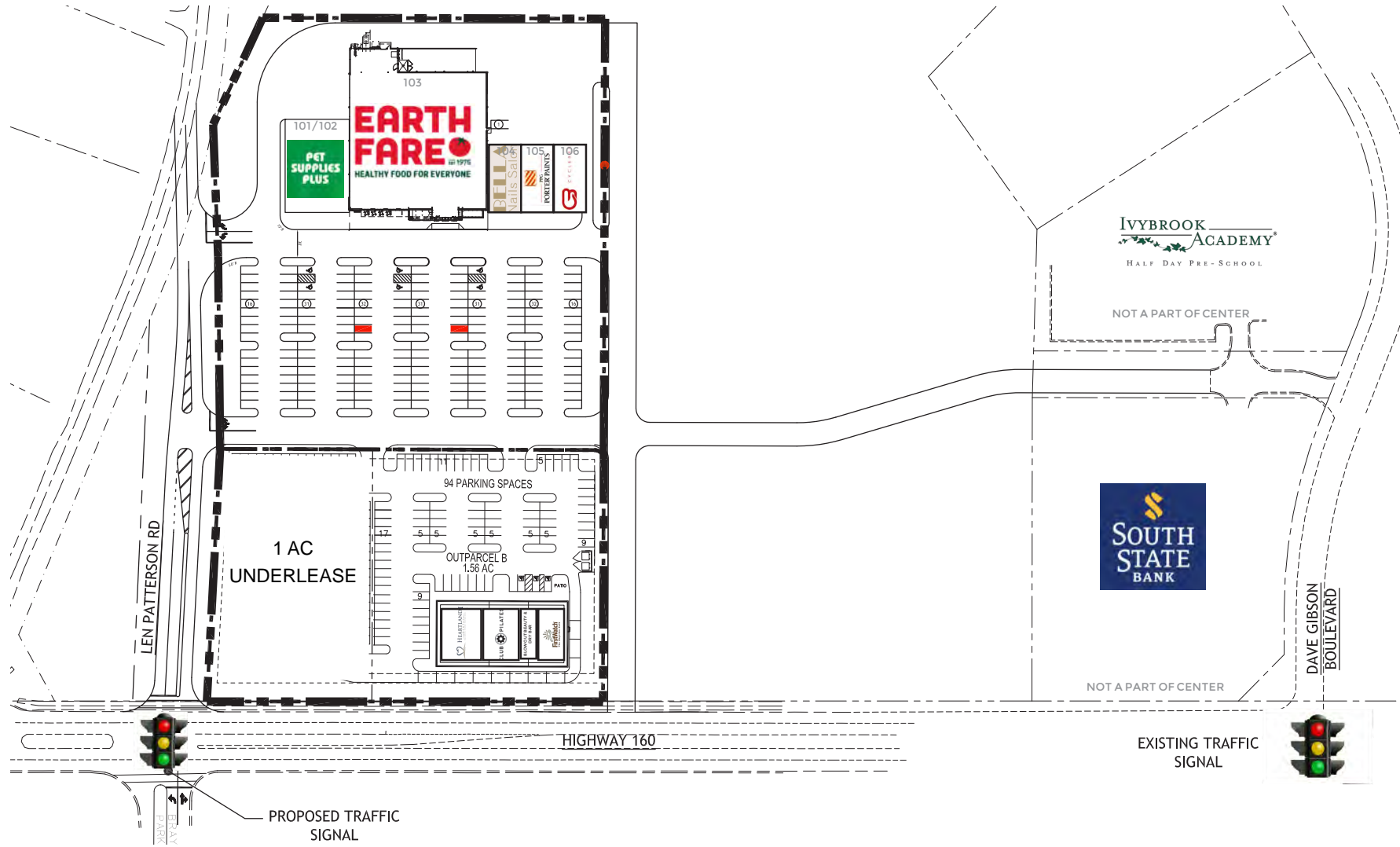


# MILLS CROSSING

## SITE PLAN

CONTACT | David Hendrick  
 direct: 704.206.8350  
 dhendrick@collettre.com

Wesley Walls  
 direct: 704.206.8338  
 wwalls@collettre.com



1111 METROPOLITAN AVE, STE 700, CHARLOTTE, NC 28204  
 Mailing: P.O. BOX 36799, CHARLOTTE, NC 28236-6799  
 704.206.8300 | WWW.COLLETTRE.COM

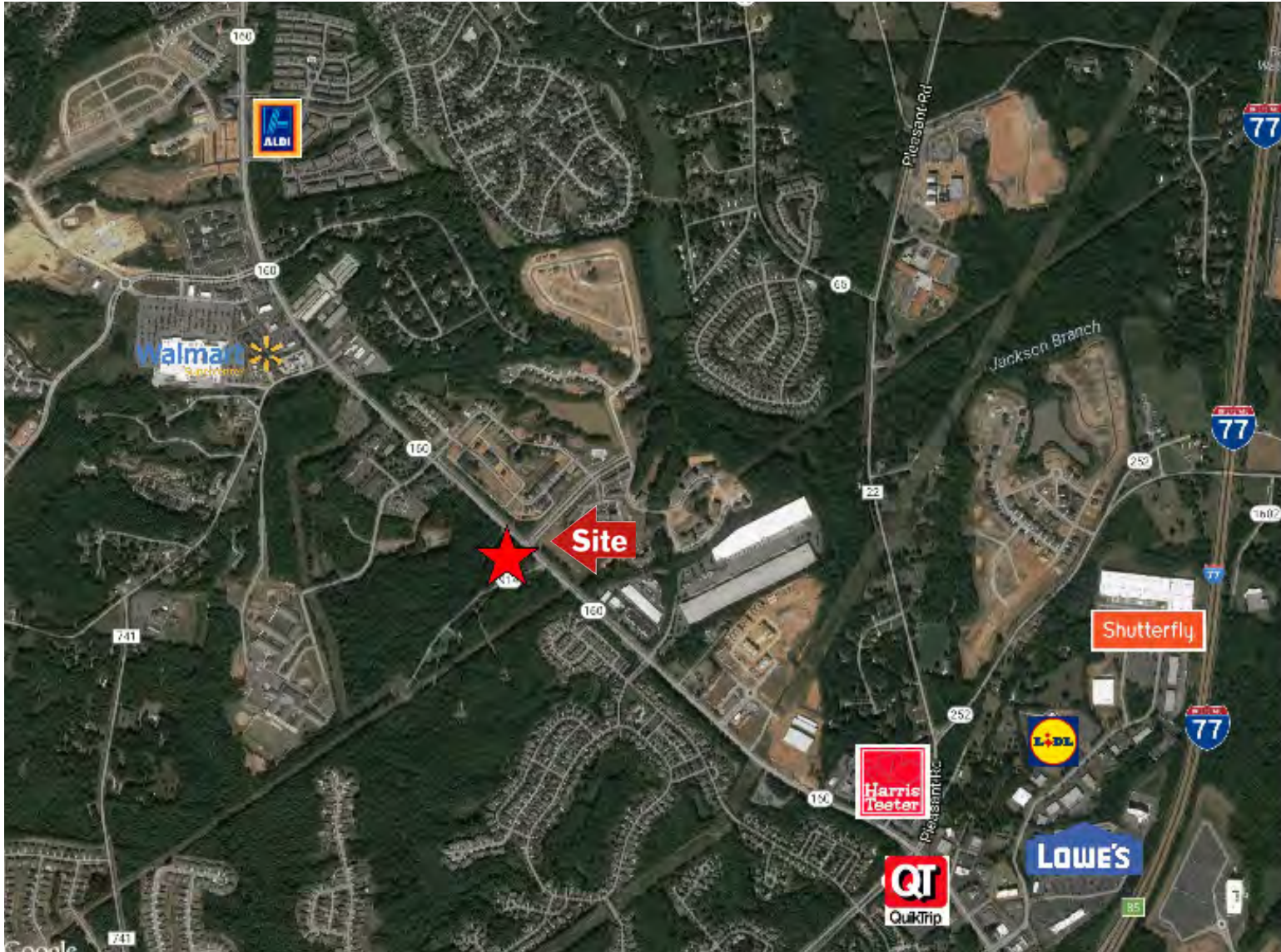




# MILLS CROSSING AERIAL

CONTACT | David Hendrick  
direct: 704.206.8350  
dhendrick@collettre.com

Wesley Walls  
direct: 704.206.8338  
wwalls@collettre.com



1111 METROPOLITAN AVE, STE 700, CHARLOTTE, NC 28204  
Mailing: P.O. BOX 36799, CHARLOTTE, NC 28236-6799  
704.206.8300 | WWW.COLLETTRE.COM

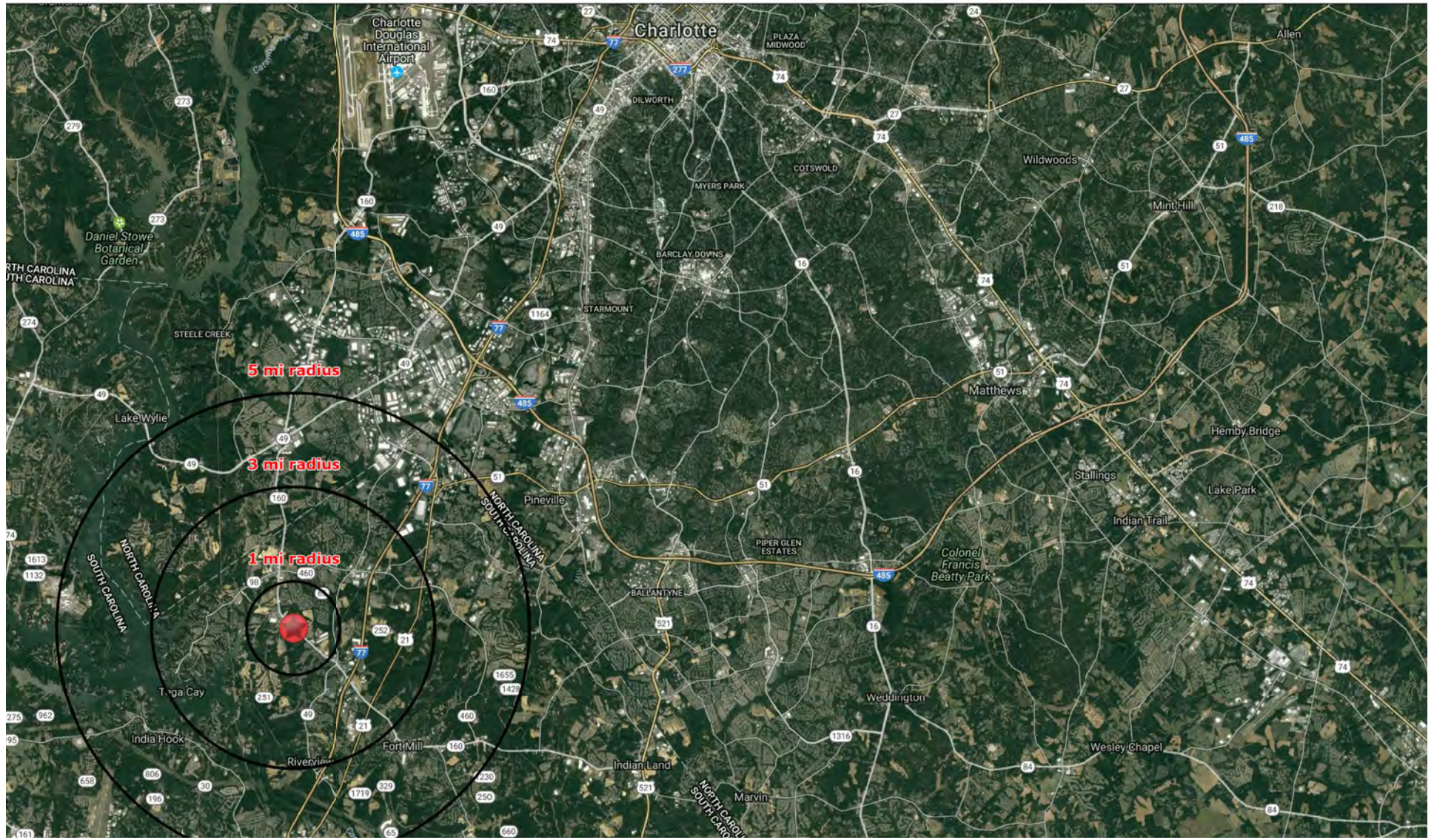




# MILLS CROSSING LOCATION AERIAL

CONTACT | David Hendrick  
direct: 704.206.8350  
dhendrick@collettre.com

Wesley Walls  
direct: 704.206.8338  
wwalls@collettre.com



1111 METROPOLITAN AVE, STE 700, CHARLOTTE, NC 28204  
Mailing: P.O. BOX 36799, CHARLOTTE, NC 28236-6799  
704.206.8300 | WWW.COLLETTRE.COM

