

MCCLINTOCK VILLAGE

NW CORNER OF CHANDLER BLVD & MCCLINTOCK DR
CHANDLER, ARIZONA



NEW RETAIL SHOPS
APPROX. 14,000SF

SOONER INVESTMENT

Commercial & Investment Real Estate

FOR MORE INFORMATION: CONTACT:

LELAND CLARK

O: 405.842.0456 C: 405.203.1085



WAL-MART
PETSMART
ROSS
Mor

Costco
Dump

CVS

SAFARI

Fry's

Fry's
WAL-MART

CVS

HARBOR FREIGHT TOOLS
Tuesday Morning

Bashas'

Walgreens

Walgreens

W Warner Rd

E Warner Rd

THE HOME DEPOT

Fry's

Albertsons

CVS

Fry's

SPROUTS

W Ray Rd

Walgreens

Fry's

Intel

Walgreens

CVS

WAL-MART
Neighborhood Market

WAL-MART
SUPERCENTER

Worby's Lobby

LOWE'S

NORDSTROM
rack
OfficeMax
ROSS
tj-max

BARNES & NOBLE
Harkins Theatres
SEARS
macy's
NORDSTROM

TARGET

COSTCO
WHOLESALE

CVS

Walgreens

THE HOME DEPOT

SAFARIWAY

Google Earth

© 2013 Google

Imagery Date: 3/13/2013

33°19'21.82" N 111°54'54.39" W elev 1181 ft

eye alt 35668 ft

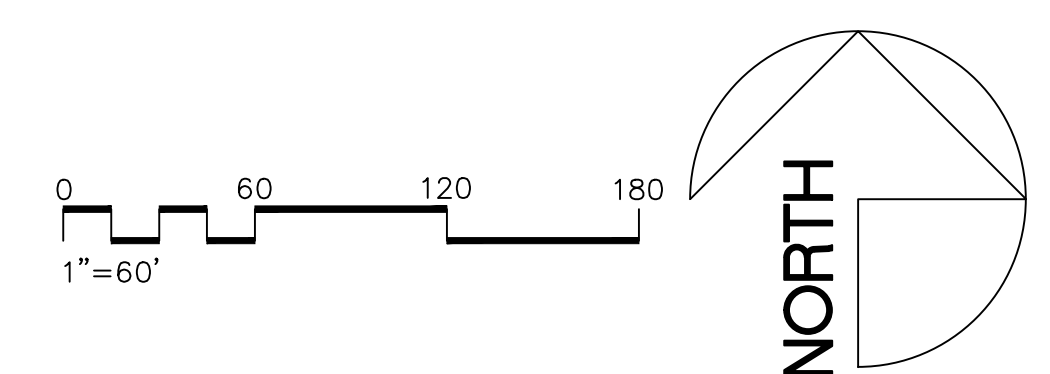
W-Harrison-St
W-Laredo-St
Desert Breeze Lake
Desert Breeze Lake, Chandler, AZ 85226, USA

Retail shops

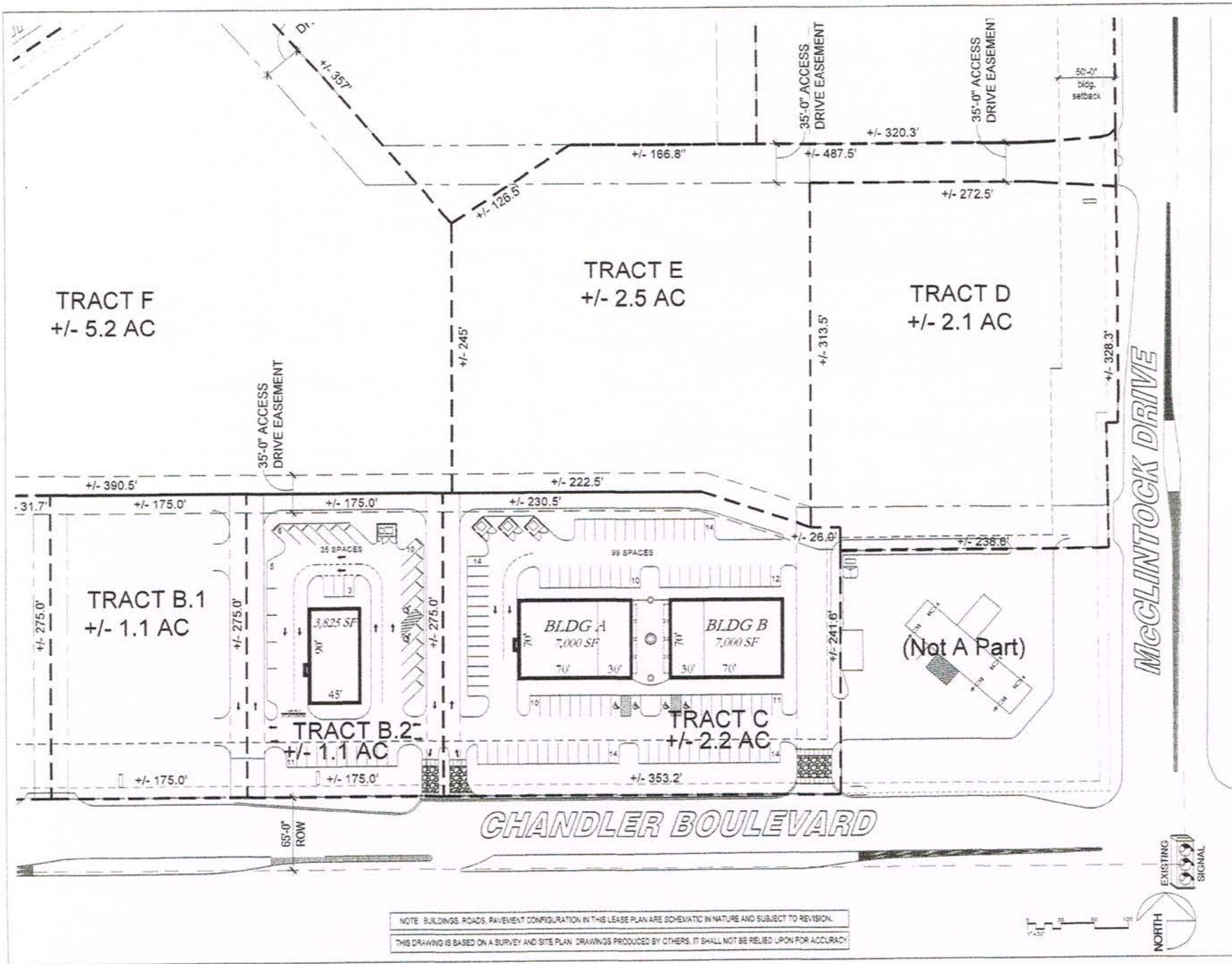
Hotel



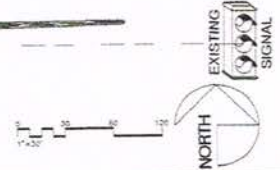
Townes at South Meadows



THIS DRAWING IS BASED ON A SURVEY AND SITE PLAN. DRAWINGS PRODUCED BY OTHERS, IT SHALL NOT BE RELIED UPON FOR ACCURACY.



NOTE: BUILDINGS, ROADS, PAVEMENT CONFIGURATION IN THIS LEASE PLAN ARE SCHEMATIC IN NATURE AND SUBJECT TO REVISION.
 THIS DRAWING IS BASED ON A SURVEY AND SITE PLAN. DRAWINGS PRODUCED BY OTHERS. IT SHALL NOT BE RELIED UPON FOR ACCURACY.



S O N N I R
 I N V E S T M E N T
 Commercial and Investment Real Estate
 130 West Washington Avenue, Suite 100
 Phoenix, Arizona 85003-1000
 (602) 442-1000

architecture
goodb
 1000 North Central Expressway
 Suite 200
 Phoenix, Arizona 85004
 (602) 998-8888

Project
McClintock Village
 CHANDLER, ARIZONA

Sheet Title
Schematic Site Plan

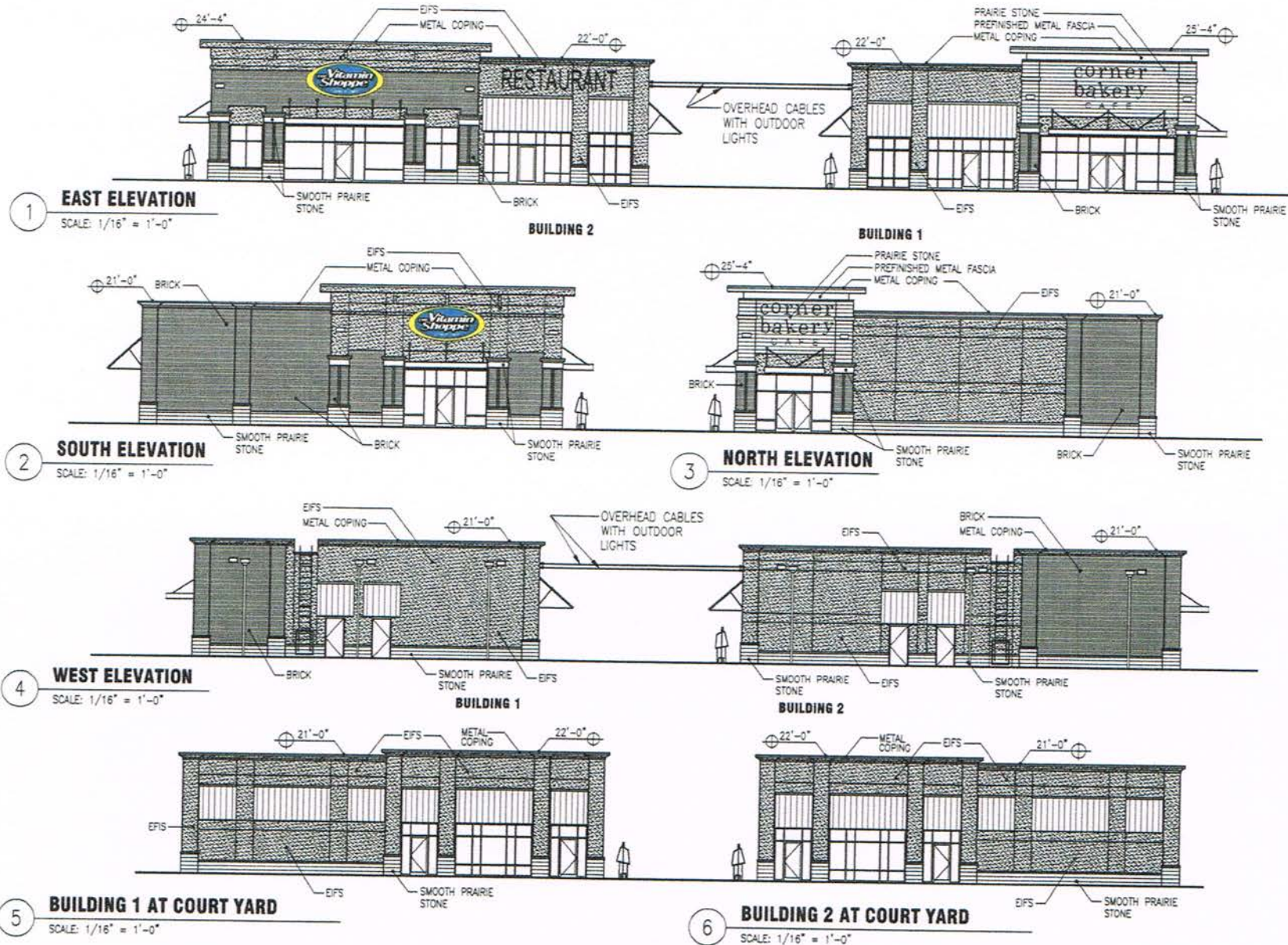
SHT- A.1

1000700

11-27-2013







Collett

INVESTMENT

Commercial and Residential Real Estate
1800 West 10th Street, Suite 100, Norman, OK 73061
(405) 261-1000 Fax: (405) 261-1001

architecture

GOOOD
1111 Massachusetts Avenue
Norman, Oklahoma 73061
Phone: (405) 261-1000
Fax: (405) 261-1001
www.collett-architecture.com

THIS DRAWING AND THE DESIGN SHOWN ARE THE PROPERTY OF COLLETT ARCHITECTURE. NO PART OF THIS DRAWING OR DESIGN MAY BE REPRODUCED OR TRANSMITTED IN ANY FORM OR BY ANY MEANS, ELECTRONIC OR MECHANICAL, WITHOUT THE WRITTEN CONSENT OF COLLETT ARCHITECTURE. ALL RIGHTS ARE RESERVED.

University Town Center
Norman, OK
UTC Area 2A Shops

ELEVATIONS

PROJECT NO.
13.011.00

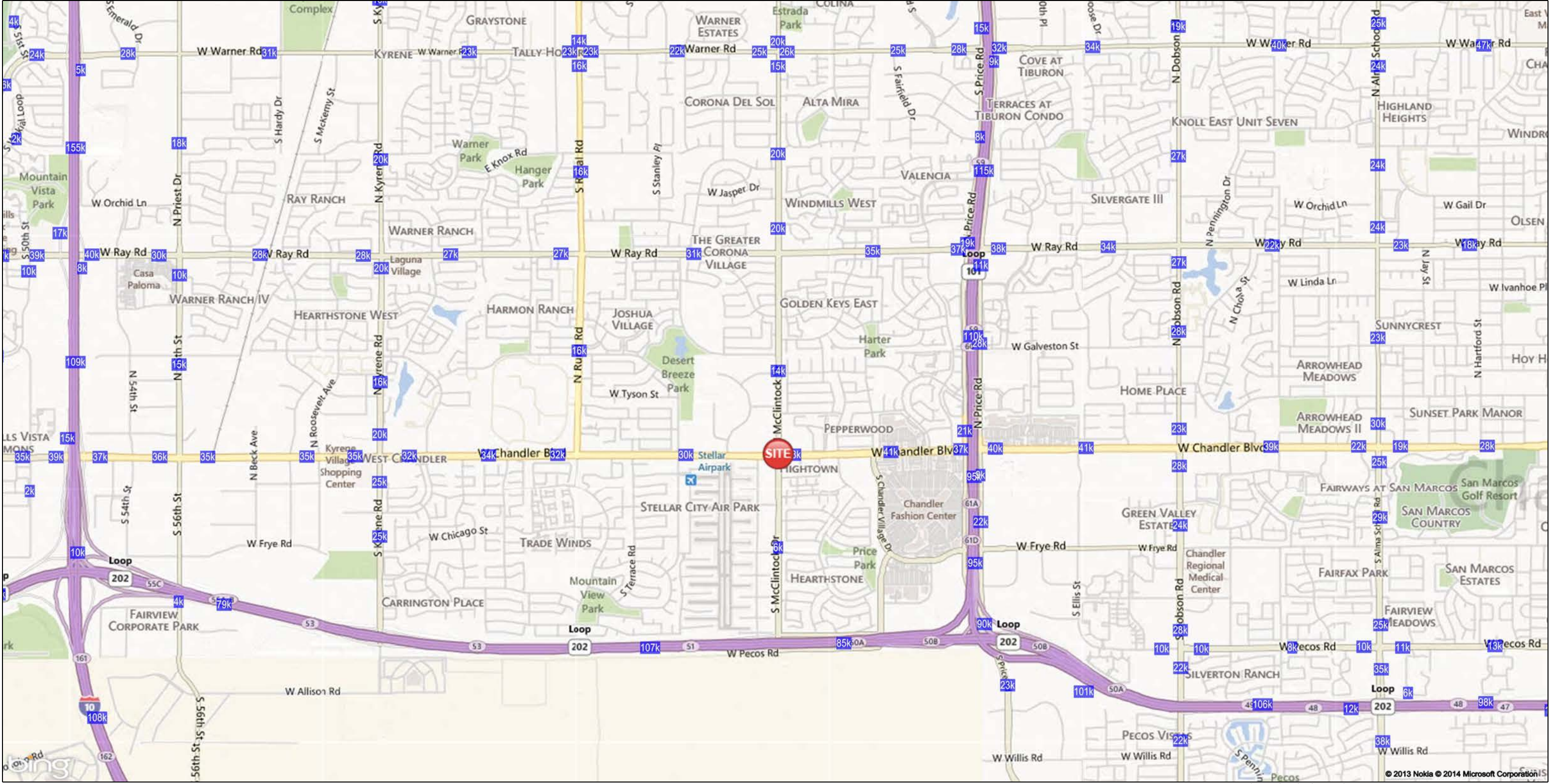
DATE
12-09-13

SHEET
LOD-3



14600

14630



N McClintock Dr & W Chandler Blvd

Chandler, AZ 85226

January 2014



FULL PROFILE

2000-2010 Census, 2013 Estimates with 2018 Projections

Calculated using Proportional Block Groups



Lat/Lon: 33.3055/-111.9111

RF1

N McClintock Dr & W Chandler Blvd

Chandler, AZ 85226

1 mi radius 3 mi radius 5 mi radius

POPULATION	2013 Estimated Population	13,374	84,422	248,517
	2018 Projected Population	14,458	91,268	268,666
	2010 Census Population	12,939	81,684	240,458
	2000 Census Population	13,571	81,515	230,346
	Projected Annual Growth 2013 to 2018	1.6%	1.6%	1.6%
	Historical Annual Growth 2000 to 2013	-0.1%	0.3%	0.6%
HOUSEHOLDS	2013 Estimated Households	5,060	33,413	97,359
	2018 Projected Households	5,452	35,996	104,875
	2010 Census Households	4,896	32,327	94,188
	2000 Census Households	4,712	29,269	83,743
	Projected Annual Growth 2013 to 2018	1.5%	1.5%	1.5%
	Historical Annual Growth 2000 to 2013	0.6%	1.1%	1.3%
AGE	2013 Est. Population Under 10 Years	12.9%	11.9%	13.2%
	2013 Est. Population 10 to 19 Years	15.4%	14.2%	13.7%
	2013 Est. Population 20 to 29 Years	15.3%	14.8%	16.1%
	2013 Est. Population 30 to 44 Years	22.0%	21.2%	22.0%
	2013 Est. Population 45 to 59 Years	23.5%	24.1%	21.2%
	2013 Est. Population 60 to 74 Years	8.4%	10.3%	10.2%
	2013 Est. Population 75 Years or Over	2.5%	3.5%	3.6%
	2013 Est. Median Age	33.8	36.3	34.6
MARITAL STATUS & GENDER	2013 Est. Male Population	49.7%	49.0%	49.4%
	2013 Est. Female Population	50.3%	51.0%	50.6%
	2013 Est. Never Married	42.7%	38.6%	39.9%
	2013 Est. Now Married	51.0%	52.9%	51.6%
	2013 Est. Separated or Divorced	4.8%	6.1%	6.0%
	2013 Est. Widowed	1.5%	2.4%	2.4%
INCOME	2013 Est. HH Income \$200,000 or More	8.9%	10.2%	7.5%
	2013 Est. HH Income \$150,000 to \$199,999	4.7%	5.3%	4.2%
	2013 Est. HH Income \$100,000 to \$149,999	16.2%	17.3%	14.8%
	2013 Est. HH Income \$75,000 to \$99,999	17.2%	14.4%	13.8%
	2013 Est. HH Income \$50,000 to \$74,999	18.6%	17.6%	19.8%
	2013 Est. HH Income \$35,000 to \$49,999	15.7%	15.0%	16.1%
	2013 Est. HH Income \$25,000 to \$34,999	8.9%	9.0%	9.0%
	2013 Est. HH Income \$15,000 to \$24,999	5.4%	5.9%	7.1%
	2013 Est. HH Income Under \$15,000	4.4%	5.3%	7.6%
	2013 Est. Average Household Income	\$82,123	\$89,440	\$78,025
	2013 Est. Median Household Income	\$71,808	\$75,387	\$66,458
	2013 Est. Per Capita Income	\$31,417	\$35,609	\$30,775
	2013 Est. Total Businesses	526	3,588	9,945
	2013 Est. Total Employees	6,727	54,098	146,883

This report was produced using data from private and government sources deemed to be reliable. The information herein is provided without representation or warranty.

FULL PROFILE

2000-2010 Census, 2013 Estimates with 2018 Projections

Calculated using Proportional Block Groups



Lat/Lon: 33.3055/-111.9111

RF1

N McClintock Dr & W Chandler Blvd		1 mi radius	3 mi radius	5 mi radius
Chandler, AZ 85226				
RACE	2013 Est. White	76.1%	76.6%	72.9%
	2013 Est. Black	4.1%	4.2%	5.2%
	2013 Est. Asian or Pacific Islander	8.7%	9.4%	7.2%
	2013 Est. American Indian or Alaska Native	2.0%	1.4%	2.4%
	2013 Est. Other Races	9.1%	8.4%	12.2%
HISPANIC	2013 Est. Hispanic Population	2,259	13,581	57,127
	2013 Est. Hispanic Population	16.9%	16.1%	23.0%
	2018 Proj. Hispanic Population	18.2%	17.4%	24.5%
	2010 Hispanic Population	16.3%	15.5%	22.3%
EDUCATION (Adults 25 or Older)	2013 Est. Adult Population (25 Years or Over)	8,585	56,398	162,559
	2013 Est. Elementary (Grade Level 0 to 8)	2.4%	2.0%	4.1%
	2013 Est. Some High School (Grade Level 9 to 11)	3.9%	3.1%	4.5%
	2013 Est. High School Graduate	18.3%	17.3%	19.3%
	2013 Est. Some College	27.2%	23.7%	24.5%
	2013 Est. Associate Degree Only	6.8%	7.5%	8.2%
	2013 Est. Bachelor Degree Only	28.6%	28.5%	24.8%
	2013 Est. Graduate Degree	12.7%	17.9%	14.7%
HOUSING	2013 Est. Total Housing Units	5,204	34,900	102,514
	2013 Est. Owner-Occupied	62.3%	61.5%	57.0%
	2013 Est. Renter-Occupied	35.0%	34.2%	38.0%
	2013 Est. Vacant Housing	2.7%	4.3%	5.0%
HOMES BUILT BY YEAR	2010 Homes Built 2005 or later	3.6%	4.8%	5.3%
	2010 Homes Built 2000 to 2004	5.1%	9.0%	10.0%
	2010 Homes Built 1990 to 1999	39.0%	38.7%	32.4%
	2010 Homes Built 1980 to 1989	39.8%	33.2%	27.8%
	2010 Homes Built 1970 to 1979	7.7%	9.2%	17.1%
	2010 Homes Built 1960 to 1969	2.2%	2.4%	3.4%
	2010 Homes Built 1950 to 1959	1.5%	1.7%	2.8%
	2010 Homes Built Before 1949	1.1%	1.0%	1.2%
HOME VALUES	2010 Home Value \$1,000,000 or More	1.0%	1.6%	1.2%
	2010 Home Value \$500,000 to \$999,999	4.3%	7.0%	5.6%
	2010 Home Value \$400,000 to \$499,999	6.4%	7.1%	6.0%
	2010 Home Value \$300,000 to \$399,999	16.7%	14.0%	12.5%
	2010 Home Value \$200,000 to \$299,999	27.7%	26.0%	26.0%
	2010 Home Value \$150,000 to \$199,999	16.3%	16.7%	18.2%
	2010 Home Value \$100,000 to \$149,999	11.9%	13.2%	15.4%
	2010 Home Value \$50,000 to \$99,999	10.8%	9.1%	9.3%
	2010 Home Value \$25,000 to \$49,999	2.0%	2.3%	2.4%
	2010 Home Value Under \$25,000	3.1%	3.0%	3.5%
	2010 Median Home Value	\$221,223	\$227,038	\$212,467
	2010 Median Rent	\$893	\$922	\$861

This report was produced using data from private and government sources deemed to be reliable. The information herein is provided without representation or warranty.

FULL PROFILE

2000-2010 Census, 2013 Estimates with 2018 Projections

Calculated using Proportional Block Groups



Lat/Lon: 33.3055/-111.9111

RF1

N McClintock Dr & W Chandler Blvd

Chandler, AZ 85226

1 mi radius

3 mi radius

5 mi radius

LABOR FORCE	2013 Est. Labor Population Age 16 Years or Over	10,466	67,287	195,329
	2013 Est. Civilian Employed	75.5%	71.5%	70.6%
	2013 Est. Civilian Unemployed	5.3%	4.5%	5.0%
	2013 Est. in Armed Forces	0.1%	0.2%	0.1%
	2013 Est. not in Labor Force	19.2%	23.8%	24.3%
	2013 Labor Force Males	49.2%	48.4%	48.8%
	2013 Labor Force Females	50.8%	51.6%	51.2%
OCCUPATION	2010 Occupation: Population Age 16 Years or Over	7,223	43,766	125,294
	2010 Mgmt, Business, & Financial Operations	17.9%	20.2%	17.5%
	2010 Professional, Related	28.1%	30.0%	26.0%
	2010 Service	16.6%	13.7%	15.6%
	2010 Sales, Office	25.7%	25.5%	27.9%
	2010 Farming, Fishing, Forestry	0.1%	0.1%	0.2%
	2010 Construction, Extraction, Maintenance	4.3%	4.1%	5.5%
	2010 Production, Transport, Material Moving	7.4%	6.5%	7.3%
	2010 White Collar Workers	71.7%	75.6%	71.4%
	2010 Blue Collar Workers	28.3%	24.4%	28.6%
TRANSPORTATION TO WORK	2010 Drive to Work Alone	80.7%	80.3%	78.9%
	2010 Drive to Work in Carpool	10.1%	10.1%	10.5%
	2010 Travel to Work by Public Transportation	1.4%	1.1%	1.7%
	2010 Drive to Work on Motorcycle	0.6%	0.4%	0.4%
	2010 Walk or Bicycle to Work	1.6%	2.0%	2.2%
	2010 Other Means	1.0%	0.6%	0.8%
	2010 Work at Home	4.6%	5.5%	5.5%
TRAVEL TIME	2010 Travel to Work in 14 Minutes or Less	30.3%	30.2%	28.0%
	2010 Travel to Work in 15 to 29 Minutes	38.7%	39.0%	41.0%
	2010 Travel to Work in 30 to 59 Minutes	28.8%	28.0%	27.5%
	2010 Travel to Work in 60 Minutes or More	2.1%	2.8%	3.5%
	2010 Average Travel Time to Work	20.0	20.3	20.6
CONSUMER EXPENDITURE	2013 Est. Total Household Expenditure	\$311 M	\$2.16 B	\$5.74 B
	2013 Est. Apparel	\$14.9 M	\$104 M	\$275 M
	2013 Est. Contributions, Gifts	\$20.1 M	\$143 M	\$369 M
	2013 Est. Education, Reading	\$8.44 M	\$60.3 M	\$156 M
	2013 Est. Entertainment	\$17.4 M	\$121 M	\$320 M
	2013 Est. Food, Beverages, Tobacco	\$49.3 M	\$341 M	\$914 M
	2013 Est. Furnishings, Equipment	\$13.9 M	\$97.2 M	\$255 M
	2013 Est. Health Care, Insurance	\$22.1 M	\$153 M	\$410 M
	2013 Est. Household Operations, Shelter, Utilities	\$93.2 M	\$649 M	\$1.72 B
	2013 Est. Miscellaneous Expenses	\$5.15 M	\$35.8 M	\$95.8 M
	2013 Est. Personal Care	\$4.51 M	\$31.3 M	\$83.3 M
	2013 Est. Transportation	\$62.0 M	\$428 M	\$1.14 B

This report was produced using data from private and government sources deemed to be reliable. The information herein is provided without representation or warranty.