

FORMER JOANN'S FOR LEASE

LAWTON, OKLAHOMA

LAWTON TOWN CENTER - NW 2ND STREET AND GORE BLVD.

Collett
RETAIL



©2014 Dave Warwick - 911

CONTACT

Robert Wright
direct 214.996.9990
mobile 214.632.3353
rwright@collettre.com

Eric Engstrom
direct 828.604.7034
mobile 336.480.5380
eengstrom@collettre.com

PROPERTY OVERVIEW

Location

Lawton Town Center is a 213,602 SF retail center that is a public-private partnership project covering 17 city blocks at the center of Lawton, OK on NW 2nd Street, a major commercial artery connecting I-44 and Downtown Lawton.

Property Information

- Former JoAnn's Fabrics and Crafts
- 18,000 square feet available
- Can be subdivided

Price

Call Broker for pricing;



Commute

Traffic Counts

Vehicles Per Day

NW 2nd Street	8,664
W Gore Blvd.	17,062



2024 Demographics

Summary	3-mile	5-mile	10-mile
Population	40,593	79,596	100,214
Households	17,052	30,291	38,064
Median HH Income	\$47,031	\$53,786	\$59,930

ELEVATION

LAWTON, OKLAHOMA

LAWTON TOWN CENTER - NW 2ND STREET AND GORE BLVD.

Collett
RETAIL



2626 COLE AVENUE | THIRD FLOOR | DALLAS, TEXAS 75204 | 214.996.9999 | WWW.COLLETTRE.COM

AERIAL

LAWTON, OKLAHOMA

LAWTON TOWN CENTER - NW 2ND STREET AND GORE BLVD.

Collett
RETAIL

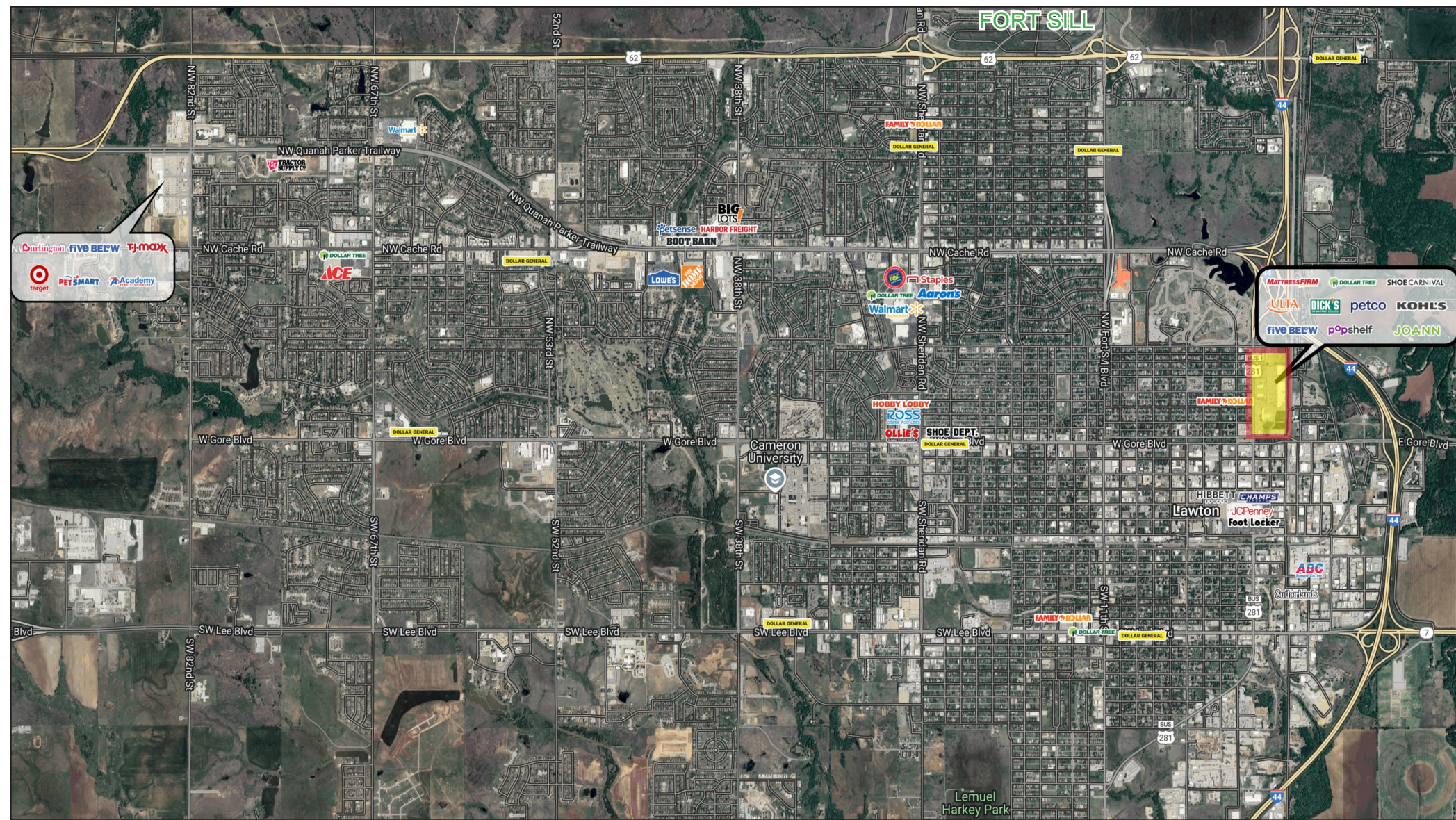


AERIAL

LAWTON, OKLAHOMA

LAWTON TOWN CENTER - NW 2ND STREET AND GORE BLVD.

Collett
RETAIL



Collett 

LAWTON, OKLAHOMA

Collett
RETAIL

