



FOUNTAIN PARK PLACE

331 E. Main Street
Rock Hill, SC 29730

CONTACT | Stanford Garnett
direct: 704.206.8345
sgarnett@collettre.com

Will Black
direct: 704.206.8349
wblack@collettre.com



1111 METROPOLITAN AVE, STE 700, CHARLOTTE, NC 28204
Mailing: P.O. BOX 36799, CHARLOTTE, NC 28236-6799
704.206.8300 | WWW.COLLETTRE.COM

DEMOGRAPHIC SNAPSHOT

	1 mile	3 mile	5 mile
Population	11,735	49,270	93,901
Projected Pop. (2028)	12,842	53,627	101,997
Average HH Income	\$58,491	\$74,023	\$88,090
Daytime Population	6,040	25,309	42,937

TRAFFIC COUNTS

Main Street W at Dave Lyle Blvd S	11,800
Main Street E at Anderson Road S	25,800

PROPERTY DETAILS

- Fountain Park Place is a 50,072 SF Class-A office building located at the corner of Main Street and Elizabeth Lane in Old Town Rock Hill, South Carolina.
- Approximately 2,988 SF 4th floor office space available
- Ten (10) private offices, conference room and large "bullpen" area.
- Triple Net Lease
- Attached 4-level parking garage



FOUNTAIN PARK PLACE

AERIAL

CONTACT | Stanford Garnett
direct: 704.206.8345
sgarnett@collettre.com

Will Black
direct: 704.206.8349
wblack@collettre.com



1111 METROPOLITAN AVE, STE 700, CHARLOTTE, NC 28204
Mailing: P.O. BOX 36799, CHARLOTTE, NC 28236-6799
704.206.8300 | WWW.COLLETTRE.COM



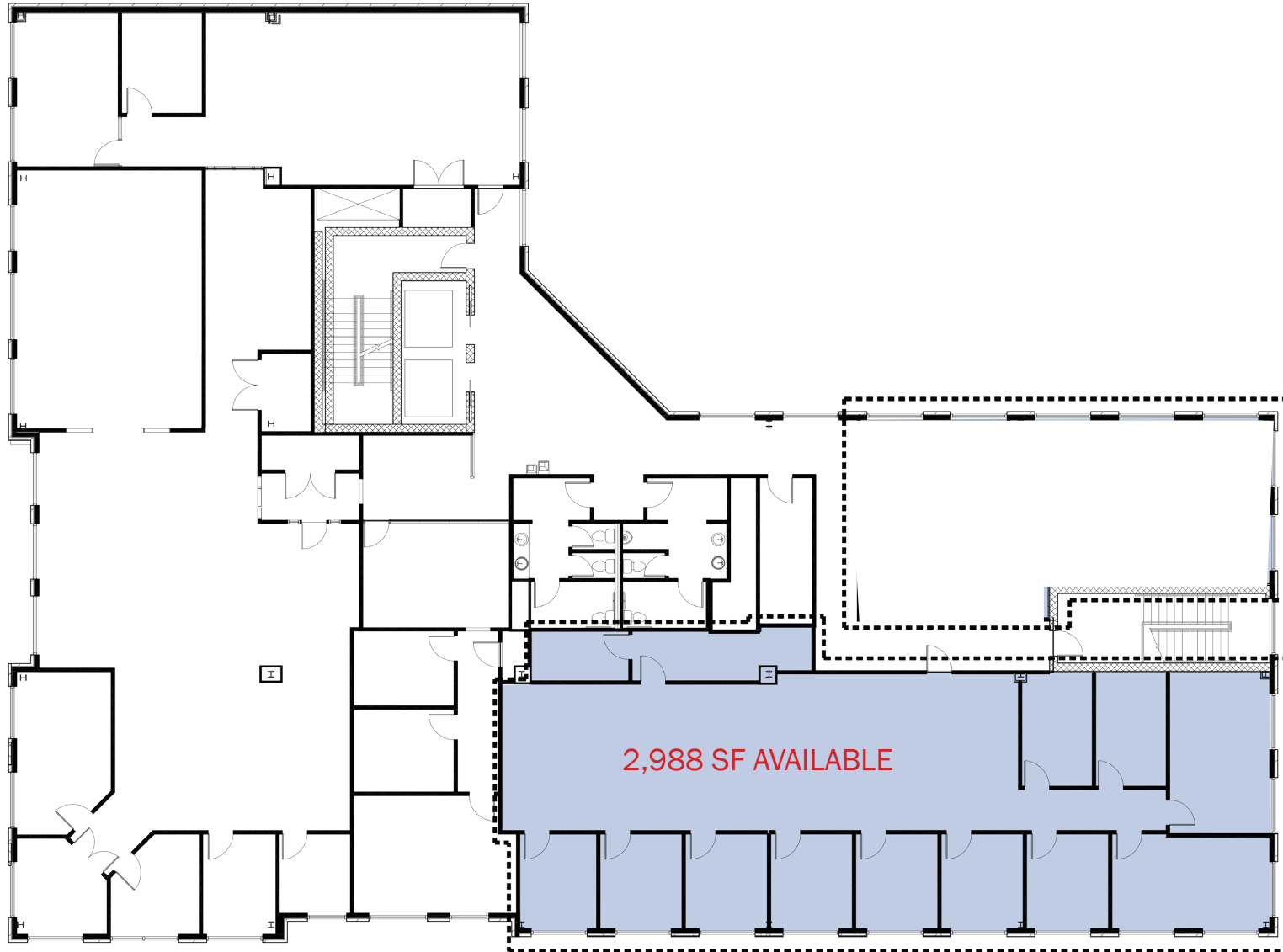


FOUNTAIN PARK PLACE

FLOOR PLAN

CONTACT | Stanford Garnett
direct: 704.206.8345
sgarnett@collettre.com

Will Black
direct: 704.206.8349
wblack@collettre.com



1111 METROPOLITAN AVE, STE 700, CHARLOTTE, NC 28204
Mailing: P.O. BOX 36799, CHARLOTTE, NC 28236-6799
704.206.8300 | WWW.COLLETTRE.COM





FOUNTAIN PARK PLACE

SPACE PHOTOS

CONTACT | Stanford Garnett
 direct: 704.206.8345
 sgarnett@collettre.com

Will Black
 direct: 704.206.8349
 wblack@collettre.com

Bullpen Area



Bullpen Area



Conference Room



4th Floor Lobby



1111 METROPOLITAN AVE, STE 700, CHARLOTTE, NC 28204
 Mailing: P.O. BOX 36799, CHARLOTTE, NC 28236-6799
 704.206.8300 | WWW.COLLETTRE.COM

