



**FOR SALE**  
 34 Market Point Drive  
 Greenville, SC 29607



217-A E. Washington Street  
 Greenville, SC 29607  
 864 752 0300

**Brayden Wynn, CCIM**  
 1 864 752 0304  
 bwynn@collettre.com



# 34 Market Point Drive

## Property Overview

### PROPERTY FEATURES

- ± 3.0 acres fronting Market Point Drive Available for Sale
- Situated directly behind the Whole Foods-anchored shopping center
- Immediate access to Woodruff Road (±40,100 VPD), I-85 (119,100 VPD), and I-385 (99,800 VPD)
- Located in the heart of Greenville's major retail corridor
- One of the last available parcels off Woodruff Road and on Market Point Drive
- Over 1,800 Apartment Units, New Ryan Townhome Development, and four Hotels within walking distance having over 550 rooms
- Nearby retailers/restaurants include: Whole Foods Market, The Shops at Greenridge, P.F. Chang's, Topsy Taco, Lowe's Home Improvement, PGA Superstore, Rockler, Cracker Barrel Old Country Store, Red Robin, Trader Joe's, Starbucks, Target, Crumbl Cookies, and more



### DEMOGRAPHICS

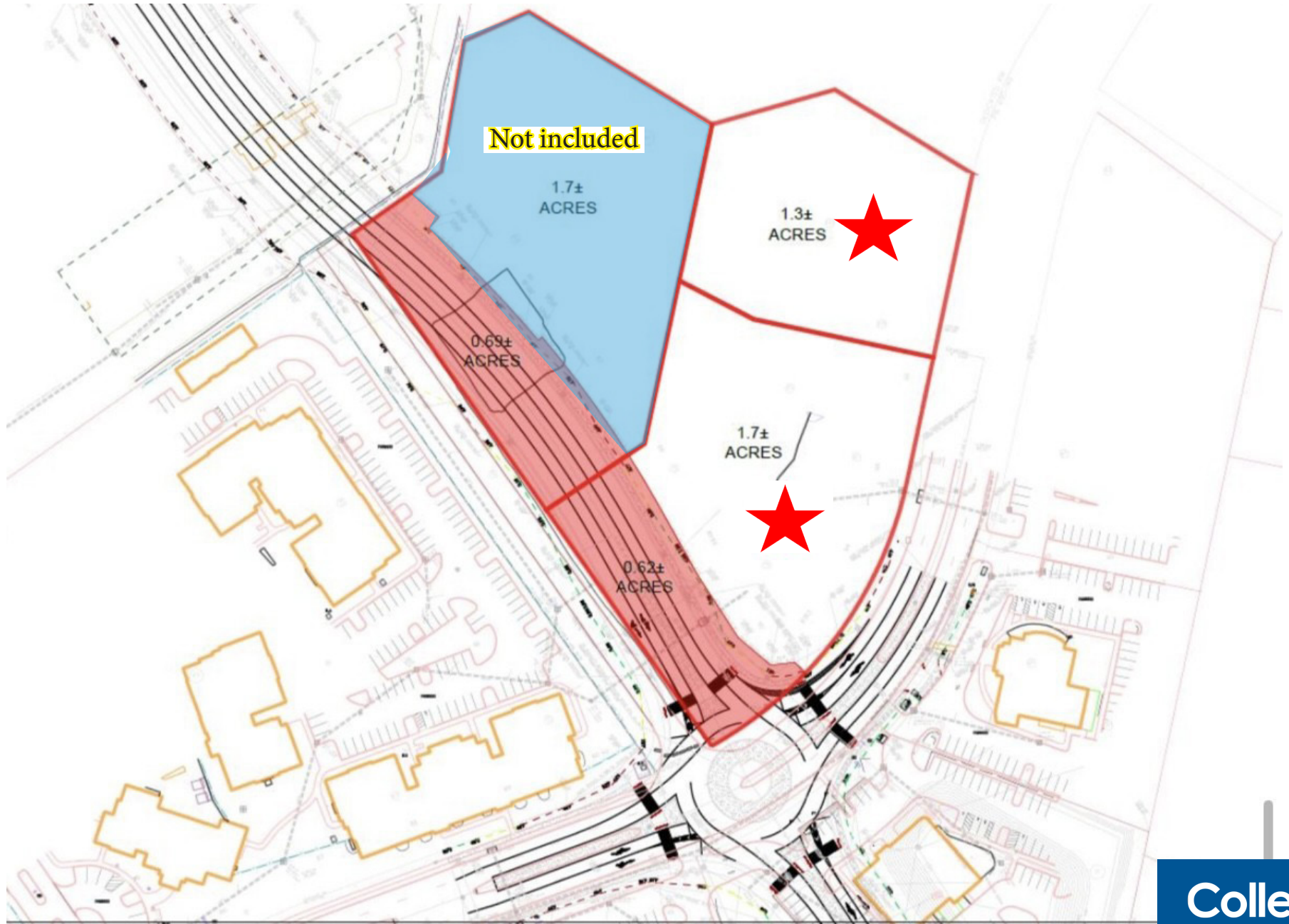
	1 mile	3 miles	5 miles
Population	4,996	59,519	160,415
Employees	11,504	52,915	102,159
Avg HH Income	\$138,245	\$125,373	\$127,541

### TRAFFIC COUNTS

Woodruff Road	40,100 VPD
Market Point Drive	6,100 VPD



# Proposed SCDOT Connector Road









# Birds-Eye View

