

The Daniel

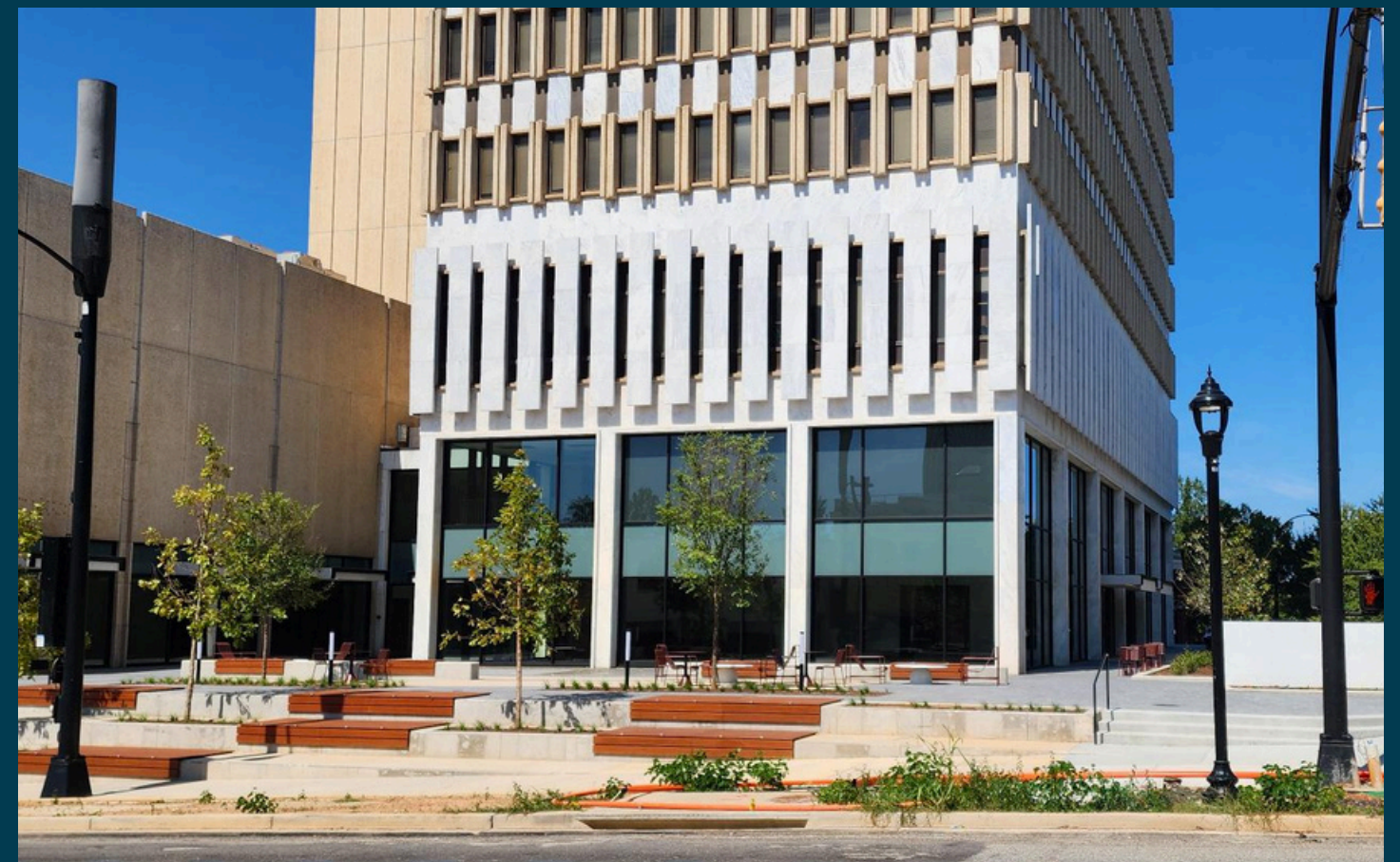
301 North Main Street
Greenville, South Carolina 29601



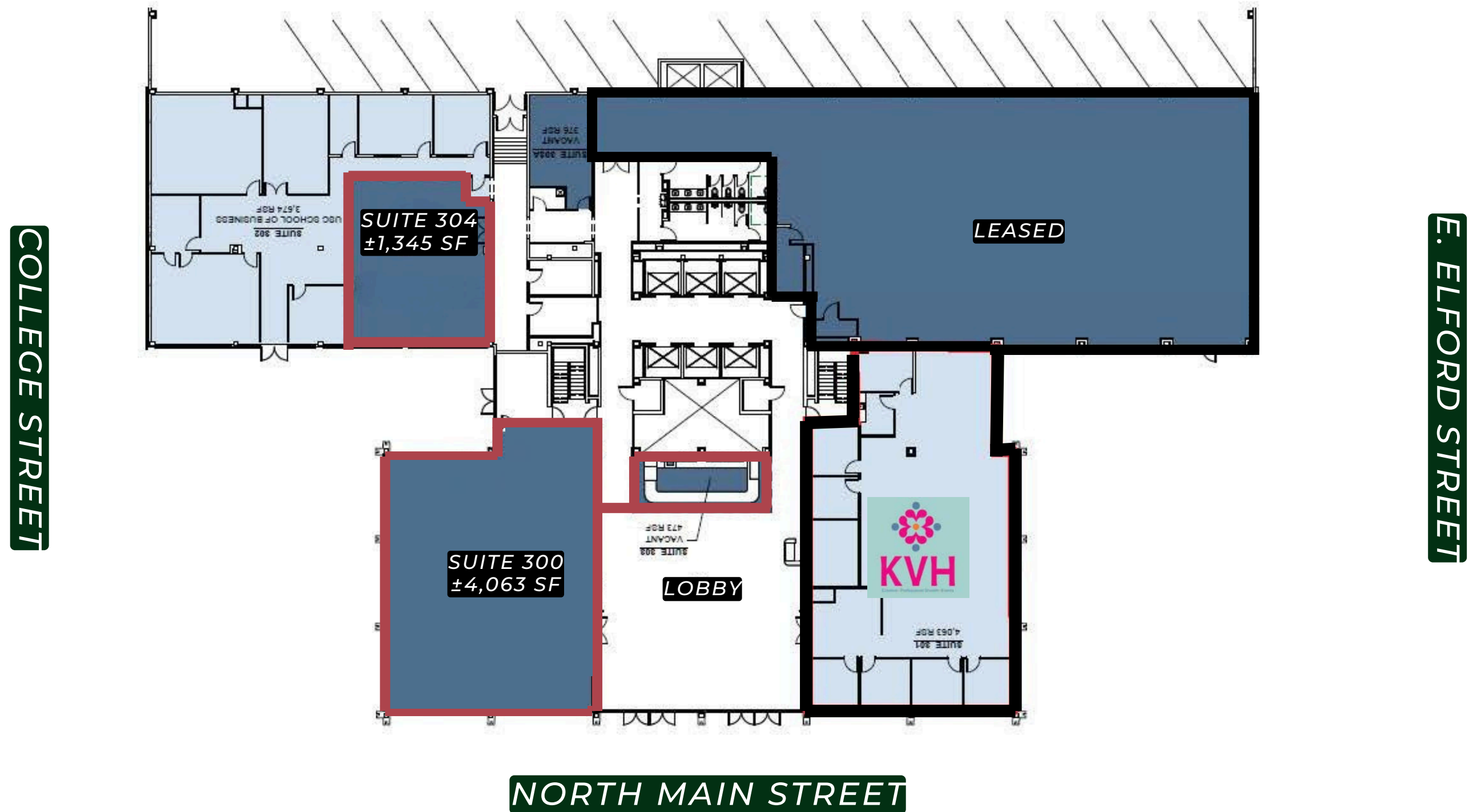
The Daniel

Highlights & Retail Suites Availability

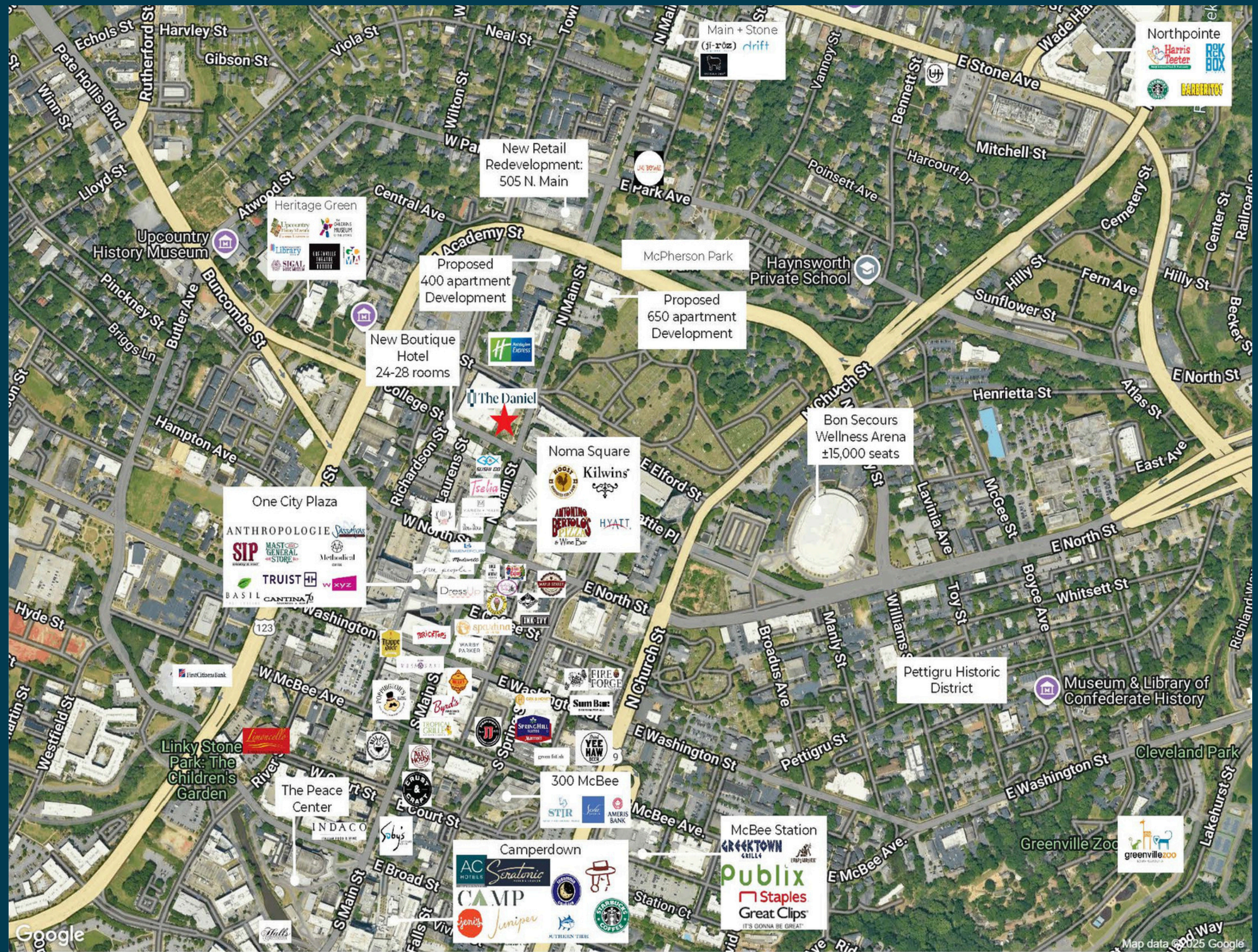
- Suite 300: $\pm 3,000$ SF plus $\pm 1,063$ SF Mezzanine
- Suite 304: $\pm 1,345$ SF
- Fully equipped wine/coffee bar in Lobby with storage room (approx. 849 SF)
- Abundant outdoor patio space
- Over 300 on-site parking spaces
- Lobby level of 25-story office tower, the Daniel Building is the tallest building in Greenville
- \$4 million renovation complete
- Situated on the main thoroughfares of Main Street and College Avenue
- Easily accessed from I-385 and US-29 and affords its tenants the amenities of Greenville's central business district
- 0.4 mile from Bon Secours Wellness Arena



Floor Plan



Downtown Aerial





RETAIL LEASING

Cortney Carter

217-A East Washington Street
Greenville, SC 29607
864.752.0302
ccarter@collettre.com

Brayden Wynn

217-A East Washington Street
Greenville, SC 29607
864.752.0304
bwynn@collettre.com



301 North Main Street Greenville, South
Carolina 29601