



Retail Redevelopment

15 E. Coffee Street | Greenville, SC 29601

Rendering of building facade



217-A E. Washington Street
Greenville, SC 29607
864 752 0300

Cortney Carter
1 864 752 0302
ccarter@collettre.com

Downtown Retail Available

Property Overview

PROPERTY FEATURES

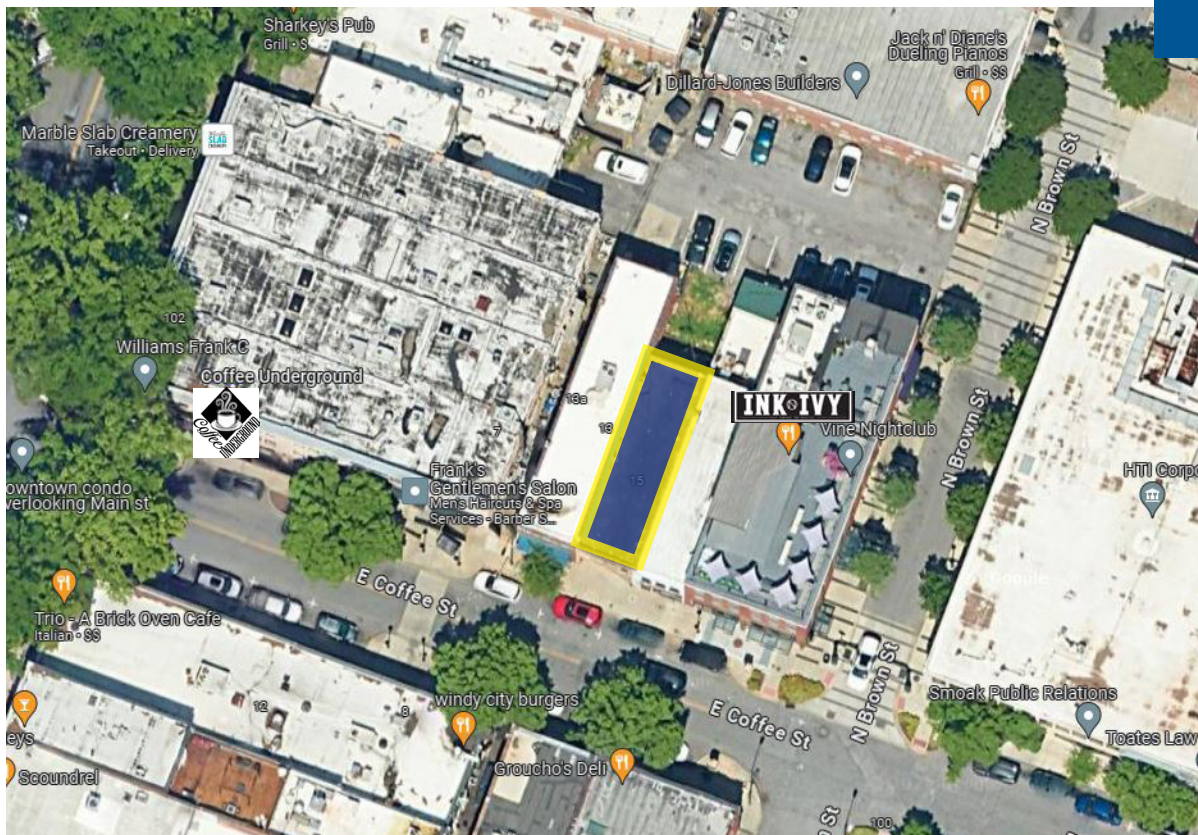
- Available 2nd Quarter 2026
- ± 1,167 SF ground floor
- ± 1,240 SF 2nd floor
- Located 1/2 block from ONE Plaza (Anthropologie, Tupelo Honey, Orivs, Mast General Store, etc.)
- Nearby retail/restaurants include Methodical Coffee, Lou Lou Boutique, Bluemercury, Rush Wilson Limited, Savannah Bee Company, Dress Up, Ink + Ivy, Cantina 76

DEMOGRAPHICS

	1 mile	3 miles	5 miles
Population	12,246	85,251	175,823
Avg. HH Income	\$86,208	\$109,439	\$105,347
Households	6,488	37,184	76,195
Employees	21,355	58,445	108,144

PEDESTRIAN COUNTS

E. North Street	184,900 yearly
N. Main Street	196,400 yearly



Downtown Retail Available

Floor Plan



Downtown Retail Available

Demographics

KEY FACTS

12,246
Population

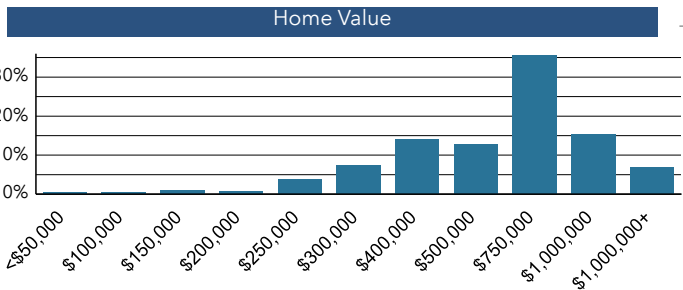
1.7
Average Household Size

38.1
Median Age

\$86,208
Median Household Income

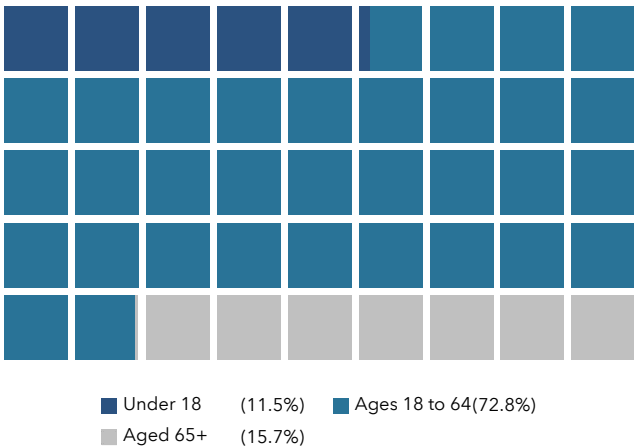
15 E Coffee St, Greenville, South Carolina, 29601
Ring: 1 mile radius

12,246	6,351	1.73	38.1	\$86,208	\$568,038	86	62	51
Population	Households	Avg Size Household	Median Age	Median Household Income	Median Home Value	Wealth Index	Housing Affordability	Diversity Index



 \$86,208 Median Household Income	 \$65,272 Per Capita Income	 \$90,893 Median Net Worth
---	-----------------------------------	----------------------------------

POPULATION BY AGE



ANNUAL HOUSEHOLD SPENDING

 \$2,915 Apparel & Services	 \$8,509 Groceries	 \$343 Computers & Hardware	 \$7,918 Health Care	 \$4,716 Eating Out
-----------------------------------	--------------------------	-----------------------------------	----------------------------	---------------------------

AVERAGE AMOUNT SPENT ON RETAIL GOODS

\$221,112,098
2024 Retail Goods

EMPLOYMENT

 White Collar 82%	 3.9% Unemployment Rate
 Blue Collar 9%	
 Services 8%	

ANNUAL LIFESTYLE SPENDING

 \$3,370 Travel	 \$88 Theatre/Operas/Concerts	 \$74 Movies/Museums/ Parks
 \$89 Sports Events	 \$12 Online Games	



Source This infographic contains data provided by Esri (2024, 2029), Esri-U.S. BLS (2024), Esri-MRI-Simmons (2024). © 2025 Esri

Downtown Retail Available

Aerial

