

WILLIMON BUSINESS PARK

Distribution / Manufacturing / Warehouse
Class A Industrial Park | Greenville, SC

Willimon Business Park consists of ±116 acres and multiple planned industrial spec buildings by developer Collett Industrial in the Greenville, SC market. This location offers unmatched proximity to major interstate I-85 and the South Carolina Technology & Aviation Center(SCTAC), an established industrial district with corporate tenants like Michelin, Lockheed Martin and 3M only a few miles away.



John Montgomery
Vice President
+1 864 527 5422
john.montgomery@colliers.com

Garrett Scott, SIOR
Vice President
+1 864 527 5453
garrett.scott@colliers.com

Brockton Hall, SIOR
Vice President
+1 864 527 5441
brockton.hall@colliers.com

WILLIMON BUSINESS PARK

Collett
INDUSTRIAL

SITE PLAN ONE



SITE PLAN ONE

Building A

Size	224,640 SF
Dimensions	864' x 260'
Parking	175 Auto; 75 Trailer

Building B

Size	294,840 SF
Dimensions	702' x 420'
Parking	226 Auto; 104 Trailer

PARK & BUILDING FEATURES

Facility Potential	224,640 SF up to 673,920 SF	Clear Height	32'
Earliest Delivery	Q1 2022	Column Spacing	54' x 50' / 60' Speed Bay
Zoning	I-1; Industrial	Utility Service	All utilities on-site
County	Greenville	Fire Protection	ESFR
		Office Space	To Suit

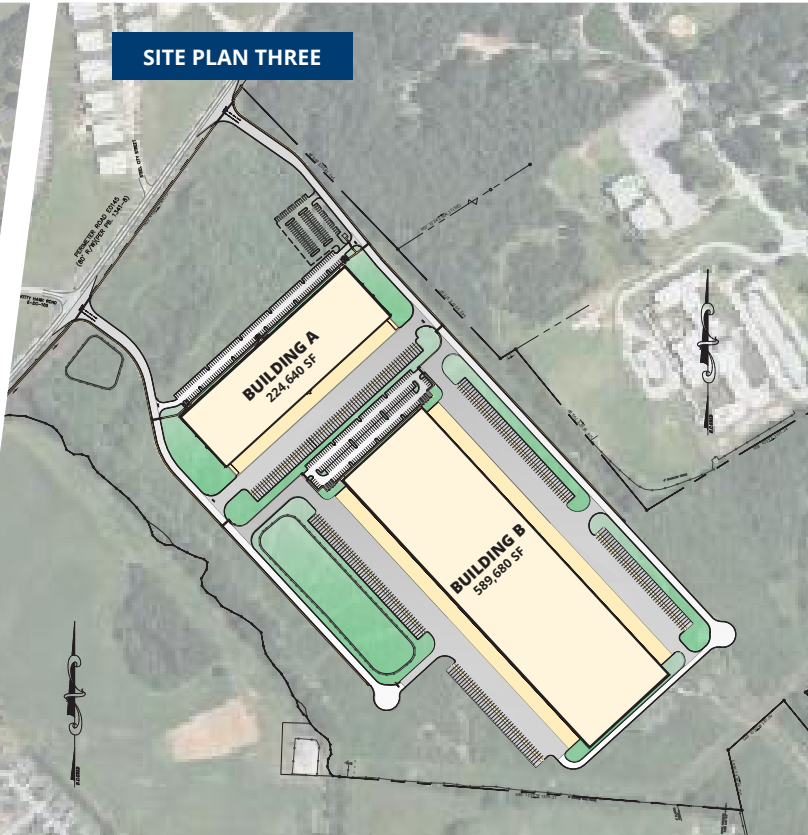
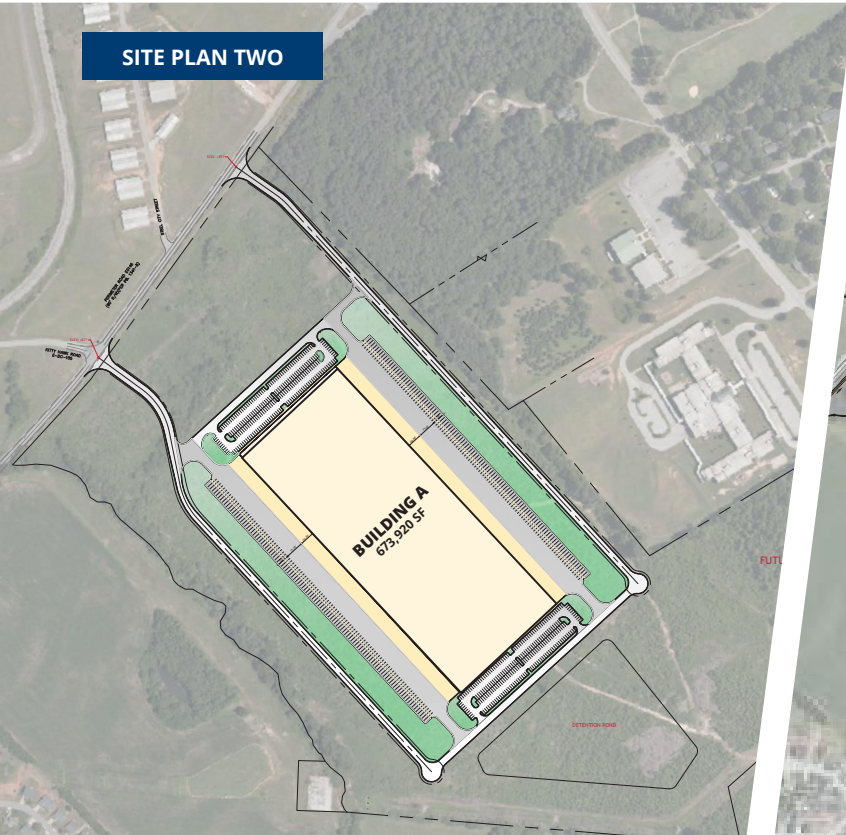
John Montgomery
Vice President
+1 864 527 5422
john.montgomery@colliers.com

Garrett Scott, SIOR
Vice President
+1 864 527 5453
garrett.scott@colliers.com

Brockton Hall, SIOR
Vice President
+1 864 527 5441
brockton.hall@colliers.com



WILLIMON BUSINESS PARK



SITE PLAN TWO

Building A

Size	673,920 SF
Dimensions	1296' x 520'
Parking	472 Auto; 216 Trailer

SITE PLAN THREE

Building A

Size	224,640 SF
Dimensions	864' x 260'
Parking	175 Auto; 72 Trailer

Building B

Size	589,680 SF
Dimensions	1,404' x 420'
Parking	226 Auto; 188 Trailer

PARK & BUILDING FEATURES

Facility Potential	224,640 SF up to 673,920 SF	Clear Height	32'
Earliest Delivery	Q1 2022	Column Spacing	54' x 50' / 60' Speed Bay
Zoning	I-1; Industrial	Utility Service	All utilities on-site
County	Greenville	Fire Protection	ESFR
		Office Space	To Suit

John Montgomery
Vice President
+1 864 527 5422
john.montgomery@colliers.com

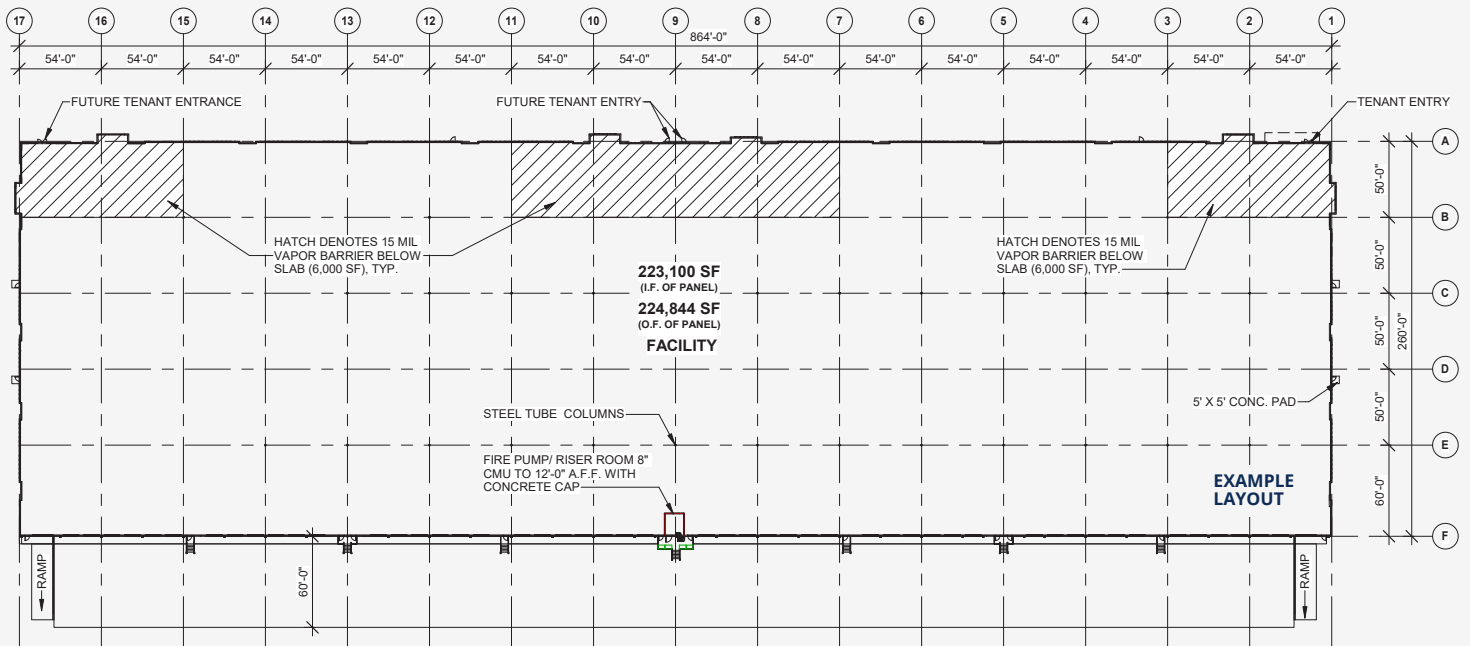
Garrett Scott, SIOR
Vice President
+1 864 527 5453
garrett.scott@colliers.com

Brockton Hall, SIOR
Vice President
+1 864 527 5441
brockton.hall@colliers.com



WILLIMON BUSINESS PARK

Collett
INDUSTRIAL



John Montgomery
Vice President
+1 864 527 5422
john.montgomery@colliers.com

Garrett Scott, SIOR
Vice President
+1 864 527 5453
garrett.scott@colliers.com

Brockton Hall, SIOR
Vice President
+1 864 527 5441
brockton.hall@colliers.com



WILLIMON BUSINESS PARK



ABOUT THE SCTAC INDUSTRIAL CORRIDOR

The South Carolina Technology & Aviation Center is a unique, leading-edge business and technology airpark located in South Carolina, a top 10 pro-business state, and global breeding ground for innovative companies dedicated to advanced manufacturing, research, and innovation.

As a former Air Force base, SCTAC's 2,600 acres are now recognized as a major aircraft maintenance center and corporate park. The indirect effect of SCTAC companies on local and state economies in 2013 totaled 1,900+ employees, payroll of \$104.4 million, and \$333.4 million in economic output.



- 103 COMPANIES (99 GLOBAL)
- 2,600 ACRES
- AIRPORT WITH 8,000' RUNWAY
- EXCESS AIRCRAFT CAPACITY
- 4,100 EMPLOYEES

John Montgomery
Vice President
+1 864 527 5422
john.montgomery@colliers.com

Garrett Scott, SIOR
Vice President
+1 864 527 5453
garrett.scott@colliers.com

Brockton Hall, SIOR
Vice President
+1 864 527 5441
brockton.hall@colliers.com



WILLIMON BUSINESS PARK



Collett
INDUSTRIAL



GREENVILLE COUNTY, SC

Greenville, SC

09
miles

GSP Airport

16
miles

Inland Port

21
miles

Atlanta, GA

147
miles

Charlotte, NC

106
miles

Industrial Snapshot (5 miles)

Michelin	1.3 miles	Lockheed Martin	1.3 miles	Kimura	3.3 miles
Magna	2.5 miles	Solvay	2.8 miles	Wabtec	4.4 miles
3M	0.7 miles	GE Aviation	3.2 miles	Americold	1.6 miles

Key Infrastructure

GSP Int'l Airport	16 miles	Port of Charleston	200 miles	FedEx Freight	20 miles
Inland Port Greer	21 miles	UPS Freight	15 miles	FedEx Air Freight	19 miles